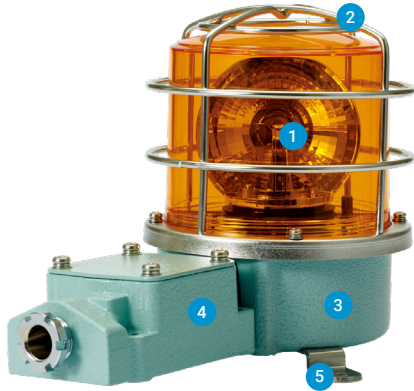


## SH1 / SH2 Series

Superior durability with fully enclosed structure and corrosion resistance, suitable for vessels and heavy industry applications



### PRODUCT SPECIFICATION

SH1 Series | SH2 Series

**Materials** Lens-PC, Housing-Al, STS316L(SH1-SUS)

Protection cage-STSS316L, Reflector-PC, Reflector for bulb type-Heat resistant ABS, Bracket-STSS316L

**Protection rating** IP66

**Housing standard color** MUNSELL No. 7.5BG 7/2

**Cable entry** 1/2" PF

- Aluminum housing and polycarbonate lens material provides excellent impact resistance under seismic conditions
- STS housing provides superior durability and corrosion resistance(SH1-SUS)
- Excellent hermetic structure that blocks water and dust
- Can select a variety of light sources (Bulb, LED, and xenon) for your application needs and environmental conditions
- Terminals located inside the terminal box or product

#### 1 Lenses

- Utilizes a strong and durable polycarbonate material with excellent shock and vibration resistance
- The lens surface has two types depending on the light source function-Light diffusion type and light transmission type



Light transmission type

LED revolving type  
Bulb revolving type  
SH( )LR | SH( )



Light diffusion type

LED steady/flashing type  
xenon lamp strobe type  
SH( )L | SH( )S

#### 2 Protection cage

- The durable protection cage is made of corrosion resistant stainless steel that prevents damage to the lens from external contact
- Materials: STS316L

#### 3 Housing

- The special aluminum body housing features superior durability
- STS housing provides superior durability and corrosion resistance(SH1-SUS)
- The housing is corrosion resistant from a special anodized surface treatment process
- Materials: Al, STS316L(SH1-SUS)

#### 4 Terminal box

- Terminal box is located on the side of housing for easy wiring
- Materials: Al

#### 5 Brackets

- Stainless steel mounting bracket is conveniently attached to the outer surface of the product
- Materials: STS316L

### A Variety of Selectable Light Source and Function Combinations

You can select from a variety of light sources for your work environment, condition, and purpose. Basic specifications are as follows.

- LED revolving type
- LED steady/flashing type
- xenon lamp strobe type
- Bulb revolving type

### Customization

- LED Strobe type
- LED revolving type

### Product Categories



Standard type

- Protection cage or terminal box not attached
- Terminals located inside the housing
- Use in environments that has low probability of damage to the lens due to external forces
- SH1/SH2 Series is available in this model



Built-in terminal box

- Equipped with a terminal box for easy wiring
- Use in environments that has low probability of damage to the lens due to external forces
- SH1T( )/ SH2T( ) is available in this model



Protection cage mounted type

- Equipped with a Protection cage
- Terminals located inside the housing
- Use in environments that has low probability of damage to the lens due to external forces
- SH1( )P/SH2( )P is available in this model



Terminal box and protection cage mounted type

- Equipped with a protection cage and a terminal box
- Terminal box enables easy wiring
- Damage to the lens from external forces can be prevented with protection cage
- SH1T( )P/ SH2T( )P is available in this model

## SH1L / SH2L



SH1LP



SH2TL






### PRODUCT SPECIFICATION

SH1L | SH2L

**Materials** Lens-PC, Housing-Al, STS316L(SH1L-SUS)  
Protection cage-ST316L, Reflector-Heat resistant ABS  
Bracket-ST316L  
**Ambient operating temperature** -30°C to +50°C  
**Protection rating** IP66  
**Housing standard color** MUNSELL No. 7.5BG 7/2  
**Cable entry** 1/2" PF  
**Flashing rate** 60-80 flashes/min

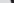
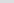


- Uniform and clear light diffusion with multi layered LED light distribution reflector
- Built-in switch for selection between steady and flashing mode
- STS housing provides superior durability and corrosion resistance(SH1L-SUS, SH1LP-SUS)

### SH1L LED Steady/Flashing Signal Beacons

Model number		Voltage	Current	Certificates	Color
SH1L	Standard type	DC12V-24V	Max.0.300A		 R-Red
SH1L-SUS	Standard type				 A-Amber
SH1LP	Protection cage type	AC110V	0.070A		 G-Green
SH1LP-SUS	Protection cage type				 B-Blue
SH1TL	Terminal box type	AC220V	0.035A		
SH1TLP	Protection cage and terminal box type				

※ CCS compliant: SH1L / SH1LP only

### SH2L LED Steady/Flashing Signal Beacons

Model number		Voltage	Current	Certificates	Color
SH2L	Standard type	DC12V-24V	Max.0.300A	-	 R-Red
SH2LP	Protection cage type	AC110V	0.070A		 A-Amber
SH2TL	Terminal box type				 G-Green
SH2TLP	Protection cage and terminal box type	AC220V	0.035A		 B-Blue

### SH1L | SH2L LED Steady/Flashing Signal Beacons Specification Category and Products Weight Chart

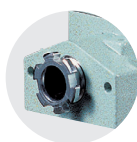
Type	SH1 Series	SH2 Series
Lens diameter	Φ125mm	Φ150mm
Standard	SH1L (1.49kg)	SH2L (1.57kg)
	SH1L-SUS (1.93kg)	
Built-in protection cage	SH1LP (1.74kg)	SH2LP (1.86kg)
	SH1LP-SUS (2.18kg)	
Built-in terminal box	SH1TL (1.95kg)	SH2TL (2.03kg)
Built-in protection cage & Terminal box	SH1TLP (2.20kg)	SH2TLP (2.32kg)

※ Product weight is based on AC type.

SH1L /SH2L models are equipped with flexible connector, and SH1TL /SH2TL models are equipped with 15C nipple at cable entry.



Flexible connector



15C nipple

### Ordering Specification

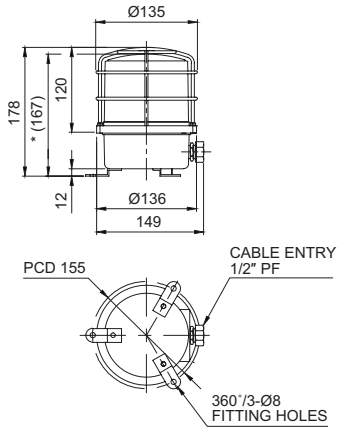
SH2L	-	220	-	R	-	SUS
[Model number]		[Voltage]		[Color]		[Housing materials]
SH1L / SH1LP		12/24-DC12V-24V 110-AC110V 220-AC220V		● R-Red ● A-Amber ● G-Green ● B-Blue		None - Al SUS - STS316L
SH1TL / SH1TLP SH2L / SH2LP SH2TL / SH2TLP						

## SH1 / SH2 Series

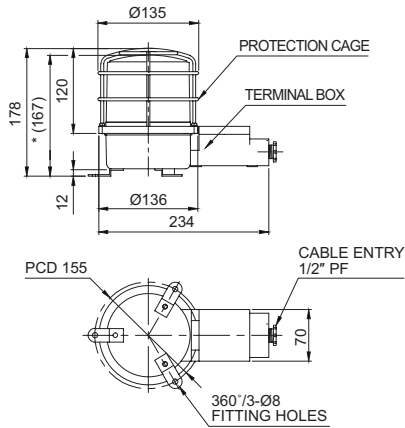
### Technical Diagram

Units: mm

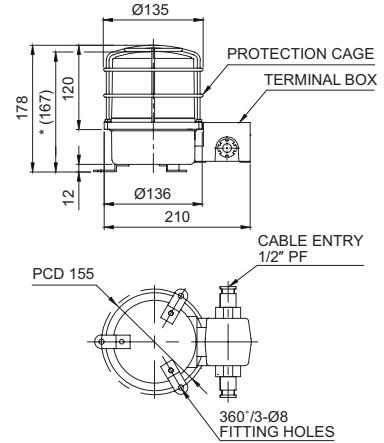
·SH1LRP(-SUS) / SH1LP(-SUS) / SH1SP(-SUS) / SH1P(-SUS)



·SH1TLRP / SH1TLP / SH1TSP / SH1TP

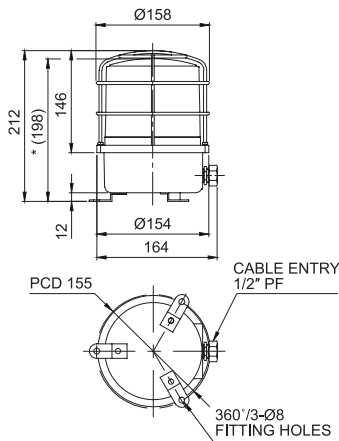


·SH1LR-2TP / SH1L-2TP / SH1S-2TP / SH1-2TP (Cable entry 2EA type)

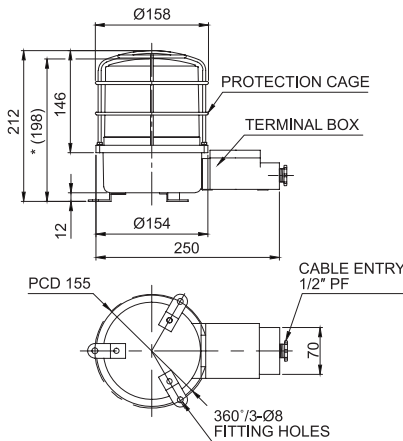


※ \*(167) represents SH1LR(-SUS)/ SH1L(-SUS)/SH1S(-SUS)/ SH1(-SUS), SH1TLR/ SH1TL/ SH1TS/ SH1T size without protection cage.

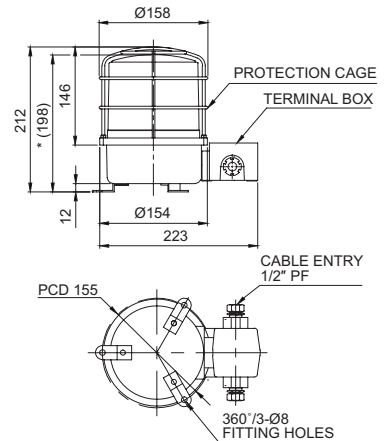
·SH2LRP / SH2LP / SH2SP / SH2P



·SH2TLRP / SH2TLP / SH2TSP / SH2TP



·SH2LR-2TP / SH2L-2TP / SH2S-2TP / SH2-2TP (Cable entry 2EA type)



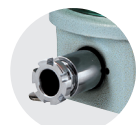
※ \*(198) represents SH2 Series size without protection cage.

### Wiring Instructions

· SH1(-SUS), SH1LR(-SUS), SH2, SH2LR : Black output line is negative(-).

### Customization

- 3/4" PF Cable entry  
Standard cable entry is 1/2" PF, 3/4" PF is customization
- Built-in cable gland type  
Flexible connector is equipped to the standard cable entry
- Brass housing product  
Color will be MUNSELL No. 7.5BG 7/2 when released.
- 2T type has 2 cable entries in the terminal box  
2 cable entries terminal box is a customized add-on.



Built-in cable gland



Brass housing product



2 cable entries terminal box model