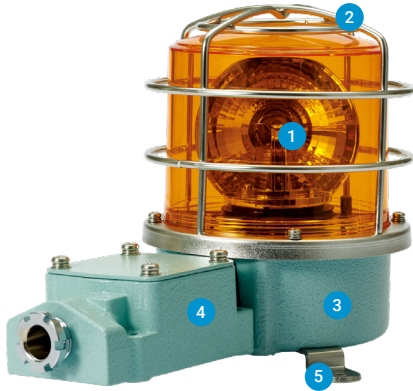


## SH1 / SH2 Series

Superior durability with fully enclosed structure and corrosion resistance, suitable for vessels and heavy industry applications



### PRODUCT SPECIFICATION

SH1 Series | SH2 Series

**Materials** Lens-PC, Housing-Al, STS316L(SH1-SUS)

Protection cage-STSS316L, Reflector-PC, Reflector for bulb type-Heat resistant ABS, Bracket-STSS316L

**Protection rating** IP66

**Housing standard color** MUNSELL No. 7.5BG 7/2

**Cable entry** 1/2" PF

- Aluminum housing and polycarbonate lens material provides excellent impact resistance under seismic conditions
- STS housing provides superior durability and corrosion resistance(SH1-SUS)
- Excellent hermetic structure that blocks water and dust
- Can select a variety of light sources (Bulb, LED, and xenon) for your application needs and environmental conditions
- Terminals located inside the terminal box or product

#### 1 Lenses

- Utilizes a strong and durable polycarbonate material with excellent shock and vibration resistance
- The lens surface has two types depending on the light source function-Light diffusion type and light transmission type



Light transmission type

LED revolving type  
Bulb revolving type  
SH( )LR | SH( )



Light diffusion type

LED steady/flashing type  
xenon lamp strobe type  
SH( )L | SH( )S

#### 2 Protection cage

- The durable protection cage is made of corrosion resistant stainless steel that prevents damage to the lens from external contact
- Materials: STS316L

#### 3 Housing

- The special aluminum body housing features superior durability
- STS housing provides superior durability and corrosion resistance(SH1-SUS)
- The housing is corrosion resistant from a special anodized surface treatment process
- Materials: Al, STS316L(SH1-SUS)

#### 4 Terminal box

- Terminal box is located on the side of housing for easy wiring
- Materials: Al

#### 5 Brackets

- Stainless steel mounting bracket is conveniently attached to the outer surface of the product
- Materials: STS316L

### A Variety of Selectable Light Source and Function Combinations

You can select from a variety of light sources for your work environment, condition, and purpose. Basic specifications are as follows.

- LED revolving type
- LED steady/flashing type
- xenon lamp strobe type
- Bulb revolving type

### Customization

- LED Strobe type
- LED revolving type

### Product Categories



Standard type

- Protection cage or terminal box not attached
- Terminals located inside the housing
- Use in environments that has low probability of damage to the lens due to external forces
- SH1/SH2 Series is available in this model



Built-in terminal box

- Equipped with a terminal box for easy wiring
- Use in environments that has low probability of damage to the lens due to external forces
- SH1T( )/ SH2T( ) is available in this model



Protection cage mounted type

- Equipped with a Protection cage
- Terminals located inside the housing
- Use in environments that has low probability of damage to the lens due to external forces
- SH1( )P/SH2( )P is available in this model



Terminal box and protection cage mounted type

- Equipped with a protection cage and a terminal box
- Terminal box enables easy wiring
- Damage to the lens from external forces can be prevented with protection cage
- SH1T( )P/ SH2T( )P is available in this model

# Heavy-Duty Xenon Strobe Signal Beacons for Vessels and Heavy Industry Applications

## SH1S / SH2S



### PRODUCT SPECIFICATION

SH1S | SH2S

**Materials** Lens-PC, Housing-Al, STS316L(SH1S-SUS)

Protection cage-ST316L, Bracket-ST316L

**Ambient operating temperature** -30°C to +50°C

**Protection rating** IP66

**Housing standard color** MUNSELL No. 7.5BG 7/2

**Cable entry** 1/2" PF

**Flashing rate** 60-80 flashes/min

- Convenient lamp change with connector type connection structure
- STS housing provides superior durability and corrosion resistance(SH1S-SUS, SH1SP-SUS)

### SH1S Xenon Strobe Signal Beacons

Model number	Voltage	Current	Xenon lamp			Certificates	Color
			Spec	Standard	Parts no		
SH1LR	Standard type	DC12V	Max.				
SH1LR-ST3	Standard type	-24V	1.300A				
SH1LRP	Protection cage type			EUB0641			R-Red A-Amber G-Green B-Blue
SH1LRP-ST3	Protection cage type	AC110V	0.160A	200V	-1A(G)		
SH1TLR	Terminal box type			-550V	U type		
SH1TLRP	Protection cage and terminal box type	AC220V	0.140A				

※ CE compliant: DC12V/24V, CCS(SH1S / SH1SP only)

### SH2S Xenon Strobe Signal Beacons

Model number	Voltage	Current	Xenon lamp			Certificates	Color
			Spec	Standard	Parts no		
SH2S	Standard type	DC12V-24V	Max.1.300A				
SH2SP	Protection cage type			EUB0641			R-Red A-Amber G-Green B-Blue
SH2TS	Terminal box type	AC110V	0.160A	200V	-1A(G)		
SH2TSP	Protection cage and terminal box type			-550V	U type		
		AC220V	0.140A				

※ CE compliant: DC12V/24V

### SH1S | SH2S Xenon Strobe Signal Beacons Specification Category and Products Weight Chart

Type	SH1S Series		SH2S Series	
Lens diameter	Φ125mm		Φ150mm	
Standard		SH1S (1.11kg)		SH2S (1.19kg)
		SH1S-SUS (1.55kg)		
Built-in protection cage		SH1SP (1.36kg)		SH2SP (1.48kg)
		SH1SP-SUS (1.80kg)		
Built-in terminal box		SH1TS (1.57kg)		SH2TS (1.65kg)
Built-in protection cage & Terminal box		SH1TSP (1.82kg)		SH2TSP (1.94kg)

※ Product weight is based on AC type.

### Ordering Specification

SH1S	-	110	-	R	-	SUS
[Model number]		[Voltage]		[Color]		[Housing materials]
SH1S / SH1SP		12/24-DC12V-24V		R-Red		None - Al
		110-AC110V		A-Amber		SUS - STS316L
		220-AC220V		G-Green		
				B-Blue		
SH1TS / SH1TSP						
SH2S / SH2SP						
SH2TS / SH2TSP						



SH1S

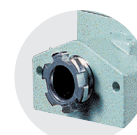


SH2TS

SH1S / SH2S models are equipped with flexible connector, and SH1TS / SH2TS models are equipped with 15C nipple at cable entry.



Flexible connector



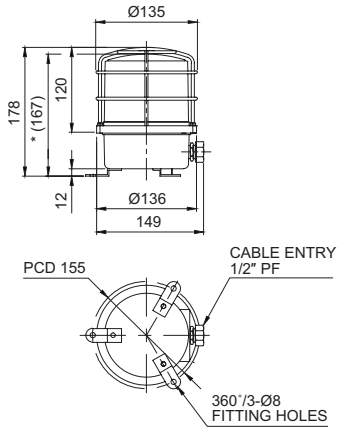
15C nipple

## SH1 / SH2 Series

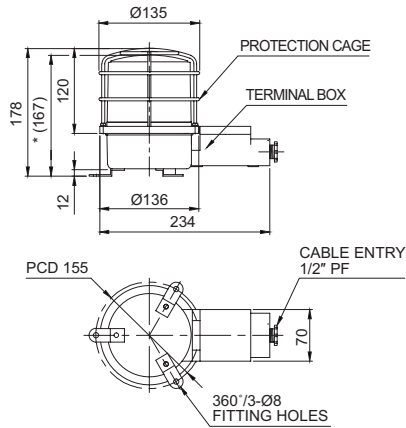
### Technical Diagram

Units: mm

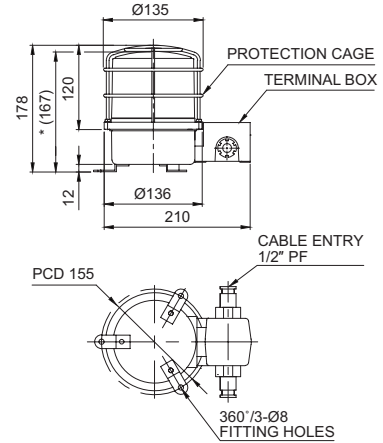
·SH1LRP(-SUS) / SH1LP(-SUS) / SH1SP(-SUS) / SH1P(-SUS)



·SH1TLRP / SH1TLP / SH1TSP / SH1TP

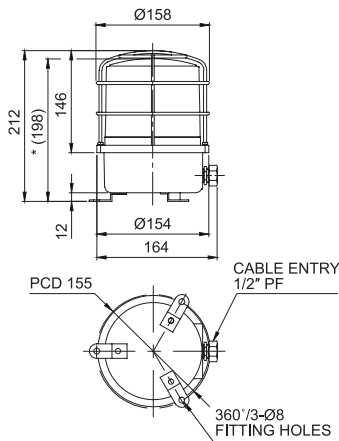


·SH1LR-2TP / SH1L-2TP / SH1S-2TP / SH1-2TP (Cable entry 2EA type)

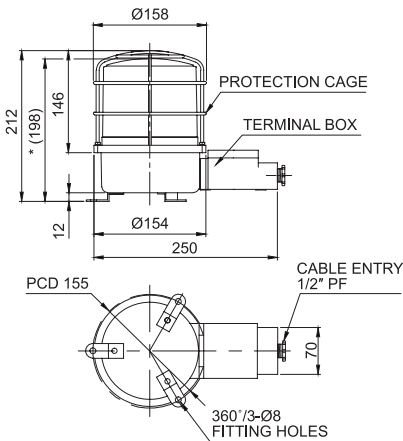


※ \*(167) represents SH1LR(-SUS)/ SH1L(-SUS)/SH1S(-SUS)/ SH1(-SUS), SH1TLR/ SH1TL/ SH1TS/ SH1T size without protection cage.

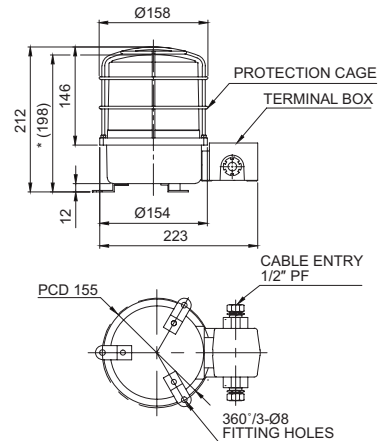
·SH2LRP / SH2LP / SH2SP / SH2P



·SH2TLRP / SH2TLP / SH2TSP / SH2TP



·SH2LR-2TP / SH2L-2TP / SH2S-2TP / SH2-2TP (Cable entry 2EA type)



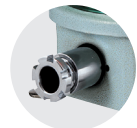
※ \*(198) represents SH2 Series size without protection cage.

### Wiring Instructions

· SH1(-SUS), SH1LR(-SUS), SH2, SH2LR : Black output line is negative(-).

### Customization

- 3/4" PF Cable entry  
Standard cable entry is 1/2" PF, 3/4" PF is customization
- Built-in cable gland type  
Flexible connector is equipped to the standard cable entry
- Brass housing product  
Color will be MUNSELL No. 7.5BG 7/2 when released.
- 2T type has 2 cable entries in the terminal box  
2 cable entries terminal box is a customized add-on.



Built-in cable gland



Brass housing product



2 cable entries terminal box model