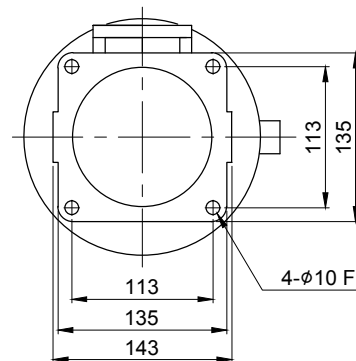
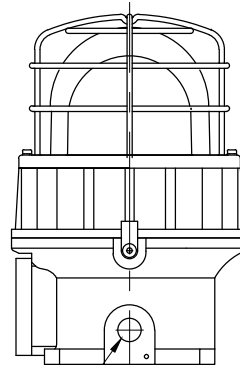




CABLE ENTRY
1/2" NPT



4-10 FITTING HOLES

MARK	DATE	REVISION	REVISER	APP .BY
1				
2				
3				

MODEL NO			SE			
MATERIAL			HOUSING-AL			
			LENS-TEMPERED GLASS			
			REFLECTOR-PC			
COLOR OF LENS			RED(), AMBER(), GREEN(), BLUE()			
REV. PER MIN.			120 ~ 140			
USE VOLT.	BULB	CURRENT	DC12V	15W	MAX. 1.145A	
			DC24V		MAX. 0.766A	
			AC110V		MAX. 0.204A	
			AC220V		MAX. 0.102A	
PROTECTION GRADE			WATER & DUST PROOF IP66			
CABLE ENTRY			1/2" NPT			
COLOR OF HOUSING			MUNSELL NO. 7.5BG 7/2			
ACTION			BLUB REVOLVING WARNING LIGHT			

ISO2768-1 : CLASS OF TOLERANCE						SURFACE FINISH	-	-	-	-	1	-
FOR LINEAR DIMENSIONS		f	m	Ⓒ	v		Nr.	DWG. NO.	TITLE/ NAME	MAT'L	QT'Y	REFERENCE
	0.5~3	±0.05	±0.1	±0.2	-		DSND BY S.H.KIM	CHKD BY J.H.PARK	CHKD BY 	APRV BY J.K.HAN	VIEW 3	DATE 2019.03.20
	3~6			±0.3	±0.5							
	6~30	±0.1	±0.2	±0.5	±1		TITLE SE OUTLINE DRAWING		MODEL SE			
	30~120	±0.15	±0.3	±0.8	±1.5					DWG. NO. SE_OUT		
	120~400	±0.2	±0.5	±1.2	±2.5						SCALE N/S	SIZE A4
400~1000	±0.3	±0.8	±2	±4								
FOR ANGULAR DIMENSIONS	0~10	±1°		±1°30'	±3°							
	10~50	±0°30'		±1°	±2°							
	50~120	±0°20'		±0°30'	±1°							
	120~400	±0°10'		±0°13'	±0°30'							

A4(297X210)