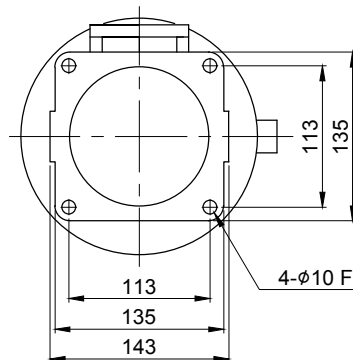
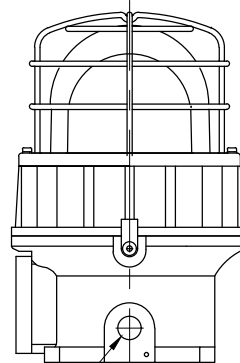


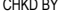

CABLE ENTRY
1/2" NPT



4-10 FITTING HOLES

MARK	DATE	REVISION	REVISER	APP .BY
1				
2				
3				

MODEL NO			SEL		
MATERIAL			HOUSING-AL		
			LENS-TEMPERED GLASS		
			REFLECTOR-HEAT RESISTANT ABS		
COLOR OF LENS			RED(), AMBER(), GREEN(), BLUE()		
FLASHING PER MIN			60 ~ 80		
USE VOLT.	LED	CURRENT	DC12V	0.08W	MAX. 0.125A
			DC24V		
			AC110V		0.035A
			AC220V		0.020A
PROTECTION GRADE			WATER & DUST PROOF IP66		
CABLE ENTRY			1/2" NPT		
COLOR OF HOUSING			MUNSELL NO. 7.5BG 7/2		
ACTION			LED STEADY/FLASHING LIGHT		

ISO2768-1 : CLASS OF TOLERANCE						SURFACE FINISH	-	-	-	-	1	-
FOR LINEAR DIMENSIONS		f	m	Ⓒ	v		Nr.	DWG. NO.	TITLE/ NAME	MAT'L	QT'Y	REFERENCE
	0.5~3	±0.05	±0.1	±0.2	-		DSND BY S.H.KIM	CHKD BY J.H.PARK	CHKD BY 	APRV BY J.K.HAN	VIEW 3	DATE 2019.03.20
	3~6			±0.3	±0.5							
	6~30	±0.1	±0.2	±0.5	±1		TITLE SEL OUTLINE DRAWING		MODEL SEL			
	30~120	±0.15	±0.3	±0.8	±1.5					DWG. NO. SEL_OUT		
	120~400	±0.2	±0.5	±1.2	±2.5						SCALE N/S	SIZE A4
400~1000	±0.3	±0.8	±2	±4								
FOR ANGULAR DIMENSIONS	0~10	±1°		±1°30'	±3°							
	10~50	±0°30'		±1°	±2°							
	50~120	±0°20'		±0°30'	±1°							
	120~400	±0°10'		±0°13'	±0°30'							

A4(297X210)