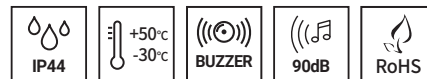


S80 Series



PRODUCT SPECIFICATION

S80AL

Materials Lens-AS, Housing-ABS,
Reflector-Heat resistant ABS
Ambient operating temperature -30°C to +50°C
Volume Max.90dB at 1m
Protection rating IP44
Flashing rate 60-80/ min
Compliant with RoHS directive

- Equipped wall mount allows for easy assembly. Additional mounting brackets not required
- Maintenance reduced with long lasting LED light source
- Terminal block designed inside the side mount bracket enables easy wiring
- Switch for selection between steady and flashing mode
- Can select between standard and built-in buzzer type depending on installation environment



S80AL

S80AL LED Steady/Flashing Signal Light

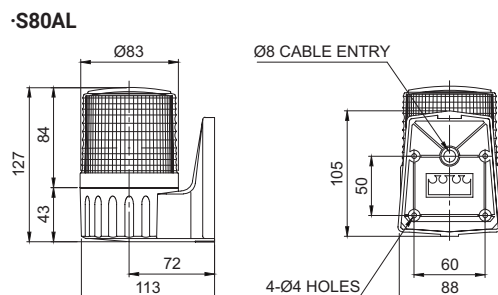
Model number	Voltage	Current	Certificates	Weight	Color
S80AL	DC12V-24V	Max.0.145A	CE	0.26kg	R-Red
	AC110V	0.035A		0.35kg	A-Amber
	AC220V	0.020A		0.35kg	G-Green
					B-Blue

※ DC type model has a free-voltage range of 10V-30V

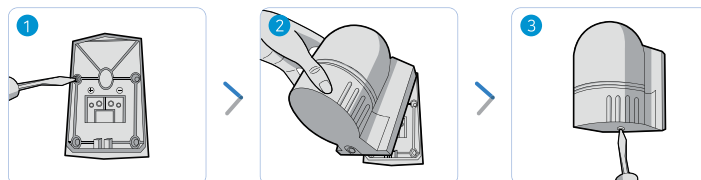
※ CE compliant: DC12V-24V

Technical Diagram

Units: mm



Mounting Instructions



- 1 Secure the base plate to the mounting surface, and the Power line to the terminal block
- 2 Mount the warning light by inserting the ring(hook) into the upper part of the base plate
- 3 Screw in the bolt at the base of the mounting bracket to complete assembly

Ordering Specification

S80AL	-	BZ	-	110	-	R
[Model number] S80AL		[Buzzer option] (None) - No buzzer BZ - Built-in buzzer		[Voltage] 12/24-DC12V-24V 110-AC110V 220-AC220V		[Color] R-Red A-Amber G-Green B-Blue



S80A Series enable easy wiring

S80A Series enables easy wiring with its terminal block attached to the fixed base plate. With this system the contacts in the housing sends Power directly to the terminal block.