

S80 Series



PRODUCT SPECIFICATION

S80AS

Materials Lens-AS, Housing-ABS
Ambient operating temperature -30°C to +50°C
Volume Max.90dB at 1m
Protection rating IP44
Flashing rate 60-80/min

- Ø80mm xenon lamp strobe signal lights
- High efficiency strobe light that offers excellent outdoor visibility and long-distance signal light luminance close to natural light
- Lamp connector fastening structure allows for convenient lamp replacement
- Can select between standard and built-in buzzer type depending on installation environment



S80AS

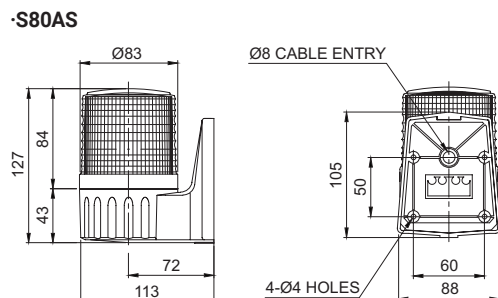
S80AS Xenon Lamp Strobe Signal Lights

Model number	Voltage	Current	Xenon lamp			Certificates	Weight	Color
			Spec	Standard	Parts no			
S80AS	DC12V-24V	Max. 0.510A	220V -350V	BGA2120	47	-	0.27kg	● R-Red
	AC110V	0.210A		-BBC			0.24kg	● A-Amber
	AC220V	0.200A		Itype			0.24kg	● G-Green ● B-Blue

※ DC type model has a free-voltage range of 10V-30V

Technical Diagram

Units: mm



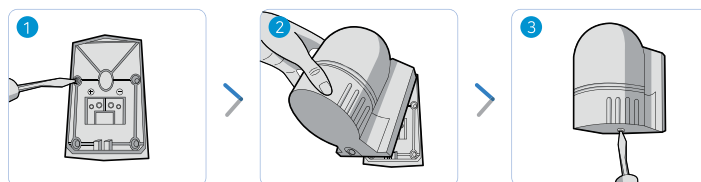
Customization

- Dome type lens

Wiring Instructions

- Attach the Power supply wire to the terminal block
- This product can be wired regardless of polarity.

Mounting Instructions



- 1 Secure the base plate to the mounting surface, and the Power line to the terminal block
- 2 Mount the warning light by inserting the ring(hook) into the upper part of the base plate
- 3 Screw in the bolt at the base of the mounting bracket to complete assembly

Ordering Specification

S80AS	-	BZ	-	12/24	-	R
[Model number] S80AS		[Buzzer option] (None) - No buzzer BZ - Built-in buzzer		[Voltage] 12/24-DC12V-24V 110-AC110V 220-AC220V		[Color] ● R-Red ● A-Amber ● G-Green ● B-Blue



S80A Series enable easy wiring

S80A Series enables easy wiring with its terminal block attached to the fixed base plate. With this system the contacts in the housing sends Power directly to the terminal block.