

SNES Series

Siren buzzer sound output of Max 105dB



SNESLR



SNESL

PRODUCT SPECIFICATION

SNESLR | SNESL
SNES-S | SNES

Materials Lens-Tempered glass, Filter-PC, Housing-Al, Protection cage-STST316L, Reflector-PC, Reflector-Heat resistant ABS, Bracket-STST316L

Ambient operating temperature

-40°C ≤ Tamb ≤ +60°C

-20°C ≤ Tamb ≤ +55°C(TIIS)

Sound volume Siren buzzer, Max.105dB at 1m

Explosion protection rating

IECEX - Ex db IIC T6 Gb, Ex db op is IIC T6 Gb (with LED)

ATEX - Ex II2G Ex db IIC T6 Gb, Ex db op is IIC T6 Gb (with LED)

NEPSI, CCC - Ex db IIC T6 Gb, IP66

KCs - Ex d IIB+H2 T6 IP66

TIIS - Ex d IIC T6 Gb, IP66

Certificates

IECEX, ATEX, NEPSI, CCC, KCs, CCS, CCC(F), TIIS

Cable entry 1/2" NPT

Housing standard color MUNSELL No. 7.5BG 7/2

- Light weight and compact explosion proof signal beacon with a siren buzzer
- A variety of light source selections from bulb, LED, and xenon lamp
- Aluminum housing provides excellent durability
- Fully enclosed structure with protection rating of IP66
- Integrated housing and terminal box model

※ Usable voltage AC120V: AC110V-120V, AC230V: AC220V-230V

SNESLR LED Revolving Signal Beacon with Siren Buzzer

Model number	Voltage	Current	Sound pattern and volume	Certificates	Weight	Color
SNESLR	DC12V	0.370A	· Warning sound(Buzzer) : Max.105dB		3.60kg	● R-Red ● A-Amber ● G-Green ● B-Blue
	DC24V	0.370A			3.60kg	
	AC120V	0.096A			4.30kg	
	AC230V	0.050A			4.30kg	

- Excellent omni-directional visibility with LED light collecting system and special multifaceted reflector
- Revolving speed: 120-140RPM

SNESL LED Steady/Flashing Signal Beacon with Siren Buzzer

Model number	Voltage	Current	Sound pattern and volume	Certificates	Weight	Color
SNESL	DC12V	0.270A	· Warning sound(Buzzer) : Max.105dB		3.65kg	● R-Red ● A-Amber ● G-Green ● B-Blue
	DC24V	0.340A			3.65kg	
	AC120V	0.060A			4.30kg	
	AC230V	0.050A			4.30kg	

- Long-lasting high intensity LED light source
- Suitable for applications where bulb replacement is hard
- Built-in steady/flashing selection switch
- Flashing rate: 60-80 flashes/min



SNES-S Xenon Strobe Signal Beacon with Siren Buzzer

Model number	Voltage	Current	Xenon lamp			Sound pattern/ dB	Certificates	Weight	Color
			Spec	Standard	Parts no				
SNES-S	DC12V	0.590A					IECEX ATEX	3.60kg	R-Red
	DC24V	0.450A	200V	BGA2120 -BBC	47	· Warning sound(Buzzer) : Max.105dB	CCS CCC	3.60kg	A-Amber
	AC120V	0.115A	-350V	I type				4.25kg	G-Green
	AC230V	0.075A						4.25kg	B-Blue

- Lamp connector fastening structure allows for convenient lamp replacement
- Excellent long-distance visibility with strong flashing signal diffusion
- Flashing rate: 60-80 flashes/min

SNES Bulb Revolving Signal Beacon with Siren Buzzer

Model number	Voltage	Current	Bulb			Sound pattern/ dB	Certificates	Weight	Color
			Spec	Standard	Parts no				
SNES	DC12V	1.400A	12V15W	G23 15S	17	· Warning sound(Buzzer) : Max.105dB	IECEX ATEX	3.70kg	R-Red
	DC24V	0.940A	24V15W	G23 15S	18		CCS CCC	3.70kg	A-Amber
	AC120V	0.200A	12V15W	G23 15S	17			4.40kg	G-Green
	AC230V	0.110A	12V15W	G23 15S	17			4.40kg	B-Blue

- Excellent signal light diffusion effect with multi-faced reflector
- Revolving speed: 120-140RPM



SNES-S

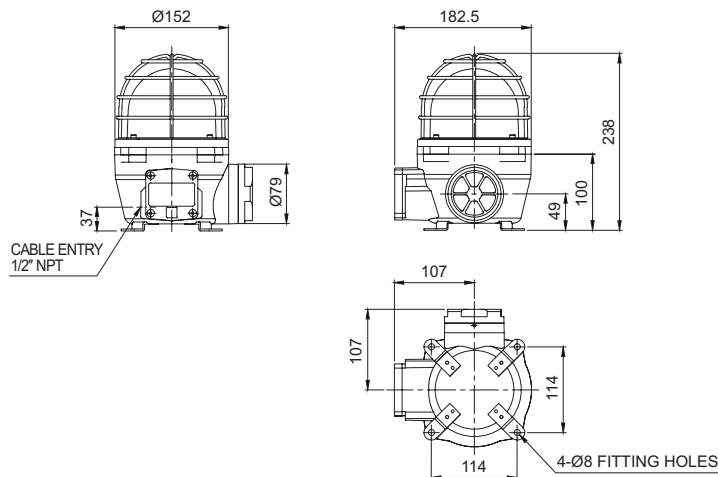


SNES

Technical Diagram

·SNESLR / SNESL / SNES-S / SNES

Units: mm



Ordering Specification

SNES	230	R	IECEX
[Model number]	[Voltage]	[Color]	[Certificates]
SNESLR	12-DC12V	● R-Red	IECEX
SNESL	24-DC24V	● A-Amber	ATEX
SNES-S	120-AC120V	● G-Green	KCs
SNES	230-AC230V	● B-Blue	TIIS(SNESLR only) CCC(NEPSI)

Customization

- Explosion proof cable gland attached type available (Standard type does not come with explosion proof cable gland)
- 2 ways cable entries
- M20x1.5 cable entry