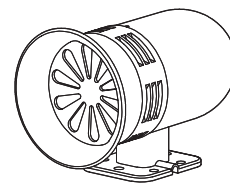


## Motor Siren

# SM30/ SM40/ SM200/ SM400



Thank you for purchasing Qlight's products. Please read this user manual carefully prior to installation and operation to ensure safe and correct use.

### ⚠ Precautions for Safety

Failure to follow the instructions below may cause a loss of life or serious physical injury.

1. During wiring or maintenance, please completely turn off the power of the product. (Failure to follow this may lead to an electric shock.)
2. Do not install the product in locations that subjects it to excessive dust or water other than the conditions designated by the IP protection ratings indicated for each product. (Failure to follow these instructions may cause a fire to the product, electric shock, physical injury, malfunction or damage to the product.)
3. Do not alter or repair this product. If maintenance or repair service is required, please contact your local Qlight contact point. (Failure to follow these instructions may lead to fire, electric shock, or product damage.)
4. Please apply the correct voltage to the product. (Failure to follow these instructions may lead to fire, electric shock, or product damage.)
5. When the product is applied to a condition that may impact lives or property, please make sure to have a double safety device. (Failure to follow this may cause damage to property, fire, electric shock and loss of life.)

### ⚠ Precautions for Correct Use

Failure to follow the proper instructions may cause damage to property, the product, or malfunction of the product that would void the warranty.

1. Please remove any objects that can interrupt ventilation around the product.
2. Please turn off the power of the product immediately if it fails to operate properly.
3. Carefully wire the product according to each product's specification.
4. Please be careful in preventing chemicals such as thinner, benzene, etc. in contact with the surface of the product.
5. Do not apply excessive force/impact to the product.
6. Failure to follow any of the instructions above may cause malfunction or damage to the product, fire, and electric shock.

### Ordering Specifications

SM30	24
[Model number]	[Voltage]
I	I
• SM30	• 12-DC12V
• SM40	• 24-DC24V
	• 110-AC110V
	• 220-AC220V
• SM200	• 24-DC24V
• SM400	• 110-AC110V
	• 220-AC220V



Please scan the QR code for more detailed product information.

[www.qlight.com](http://www.qlight.com)

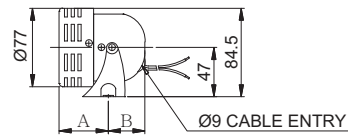
### Product Specifications

Model number	Volume	Voltage	Current	Certificate	Weight	Rated time
SM30	Max. 110dB	DC12V	5.100A	-	0.22kg	10 min.
		DC24V	3.000A		0.42kg	
		AC110V	1.220A			
		AC220V	0.750A			
SM40	Max. 116dB	DC12V	4.500A	-	0.53kg	10 min.
		DC24V	3.000A		0.68kg	
		AC110V	1.000A			
		AC220V	0.730A			
SM200	Max. 120dB	DC24V	11.000A	CE	2.19kg	10 min.
		AC110V	2.850A		2.55kg	
		AC220V	1.700A			
SM400	Max. 123dB	DC24V	5.700A	-	3.19kg	3 min.
		AC110V	4.100A		3.75kg	
		AC220V	3.200A			

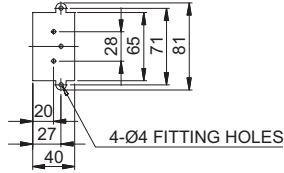
※ CE compliant : DC24V(SM200)

• Ambient operating temperature : -25°C to +50°C

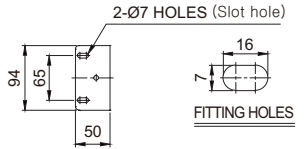
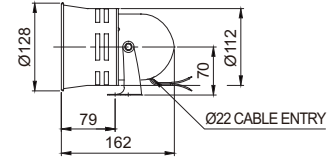
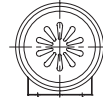
SM30



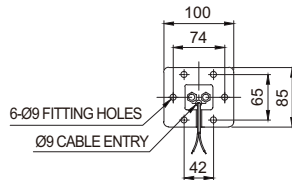
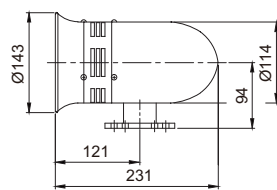
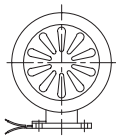
MODEL	A(mm)	B(mm)
SM30-DC	47	35
SM30-AC	72.5	32



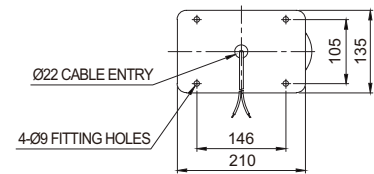
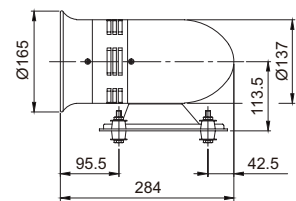
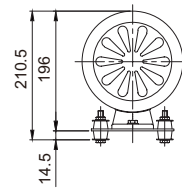
SM40



SM200



SM400



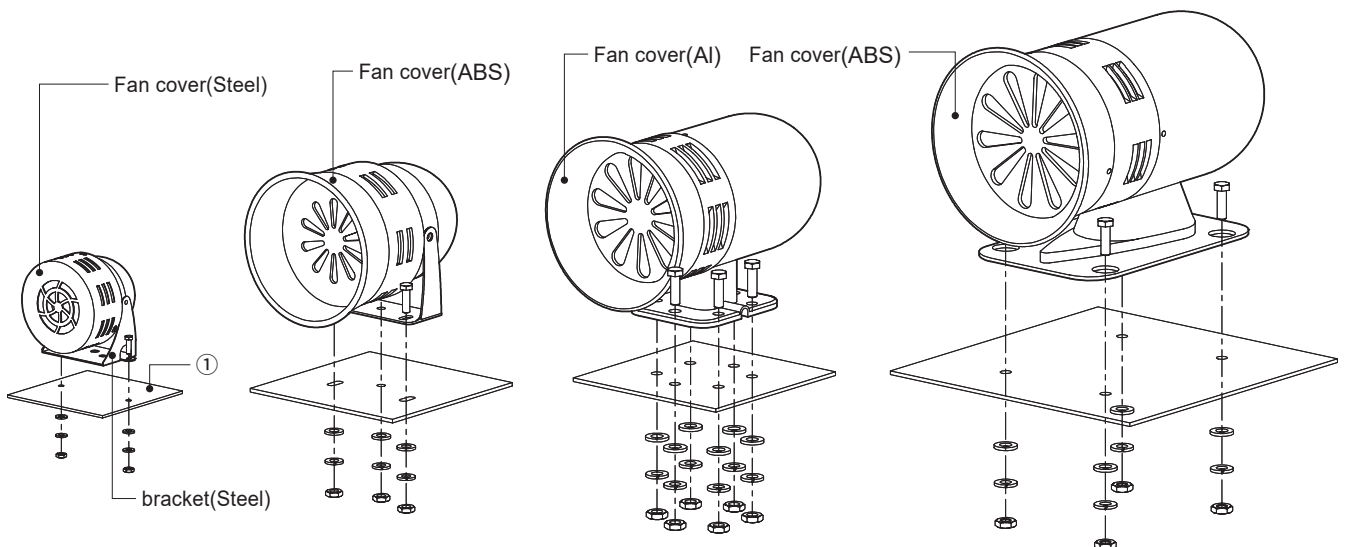
## Parts Definition/ Installation

SM30

SM40

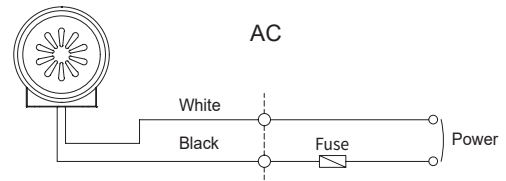
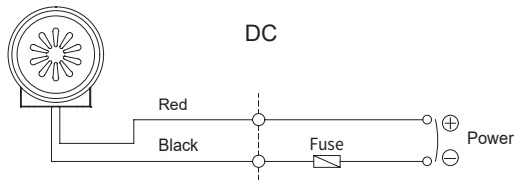
SM200

SM400



- First, machine taps or holes on the mounting surface ①.
- The mounting hole of this product is 4mm(SM30), 7mm(SM40), 9mm(SM200,400) in diameter
- When machining taps, fasten the bolt through the mounting hole of the bracket.
- When machining holes, insert the bolt through the hole of the bracket, and tighten the nut from the opposite side of the mounting surface.

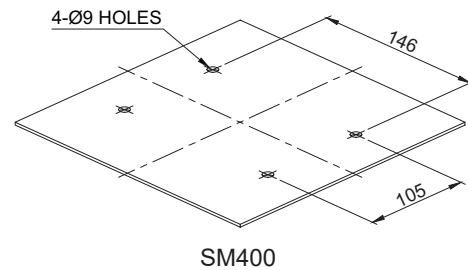
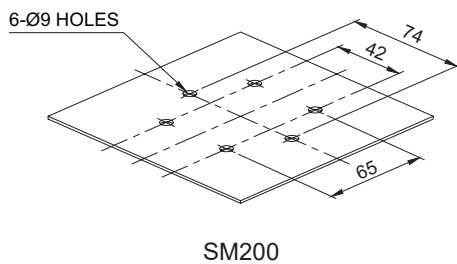
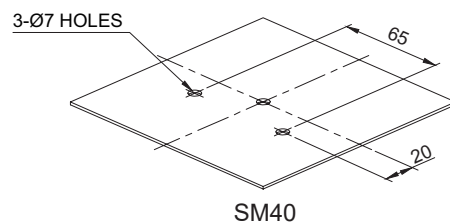
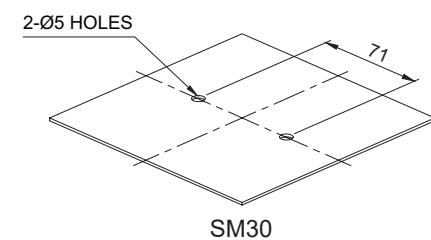
## Wiring Instructions



- External power line-AWG18(1.25sq) x 2C 500mm

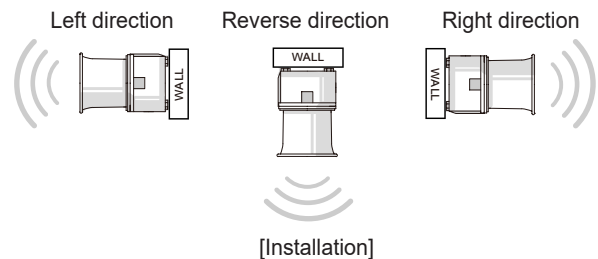
## Mounting Hole Specifications

- Machine holes on the mounting surface referring to the diagram below.



## Precautions for installation

- In case of outdoor applications, install the product in the upright position. Do not install the product horizontal or upside-down positions where water can potentially penetrate into the product and impact it's operation.



## Installation Environment and Protection Rating

- If the product is installed in locations that subject it to excessive dust or water other than the designated IP protection rating indicated(IP44), it may cause malfunction or damage to the product.
- For further information, please visit our website ([www.qlight.com](http://www.qlight.com)).



For your safety

Specification and dimensions listed in this catalogue subject to change without notice for product quality improvement.  
The newest product information is available on our website.(www.qlight.com)  
Please read the instruction manual attached to the product carefully before installation and use.

*Qlight Co., Ltd. www.qlight.com | trade@qlight.com*

Head Office | Suite #1510, STX-V Tower, 128 Gasan digital 1-ro, Geumcheon-gu, Seoul, Korea

Tel. +82-2-2679-6152(Toll free. +82-80-328-2222) Fax. +82-2-2679-6154

Factory | 185-25, Mukbang-ro, Sangdong-myeon, Gimhae-si, Gyeongsangnamdo, Korea Tel. +82-55-328-1111(Toll free. +82-80-328-1111)

Qlight Overseas Sales Dept | 704 Nakdong-daero, Sasang-gu, Busan, Korea(Eomgung-Dong) Tel : +82-51-620-4100

Qlight Public Relations & Marketing Team Office | 704 Nakdong-daero, Sasang-gu, Busan, Korea(Eomgung-Dong) Tel. +82-51-245-0017

---

*SHANGHAI Qlight Electronic Co., Ltd. www.qlight.com www.qlightcn.com | qlightcn@qlight.com*

China Factory/ Shanghai Sales Office | #Room 333 Building B, #11, Lane 450, Zhenda Road, Baoshan District, Shanghai, China

Tel. +86-2166517100 Fax. +86-2163153929

China Factory Site 2 (Qidong) | #33, Haiyan Road, Qidong High-tech Industrial Development Zone, Qidong, Jiangsu Province, China

Tel +86-513-8384-9999 Fax +86-513-8384-9910

# Qlightec

Innovation in Alarm & Signal

Product Operation Inquiry / Customer Support +82-51-620-4100

You can expect prompt service if you have exact information such as model name, symptom, telephone number and address.

※ALL PRODUCT, PRODUCT SPECIFICATIONS AND DATA ARE SUBJECT TO CHANGE WITHOUT NOTICE TO IMPROVE RELIABILITY, FUNCTION OR DESIGN OR OTHERWISE.

Head office : Suite #1510, STX-V Tower, 128 Gasan digital 1-ro, Geumcheon-gu, Seoul, Korea (Postal Code : 08507)

Factory : 185-25, Mukbang-Ro, Sangdong-Myeon, Gimhae-Si, Gyeongsangnam-Do, Korea (Postal Code : 50805)

www.qlight.com

EN-SM30-2404A