

Electronic Sounders for Vessels and Heavy Industrial Applications

SEWN30 / SEWN50 Series



Electronic sounders for vessels and heavy industrial applications featuring excellent sealing, corrosion resistance, and durability

PRODUCT SPECIFICATION

SEWN30 | SEWN50

Materials Housing-Al,
Horn housing-PC(SEWN30)/STS316L(SEWN50)
Ambient operating temperature -30°C to +50°C
Protection rating IP66
Standard Housing color MUNSELL No. 7.5BG 7/2
Cable entry 1/2" PF

- Electronic Sounder with tightly sealed structure has excellent durability. Suitable for vessels, steel industry, and outdoor plant applications
- Can select between a variety of mounting options (wall mount type, self stand type, and terminal box type)
- Aluminum housing provides excellent durability
- A variety of sound selection between warning sounds, alarm sounds, melodies and voice messages to fit your sophisticated application needs
- Can adjust sound volume with the dial built inside the unit
- Terminals located inside the terminal box or product



SEWN30E
(Max.114dB)



SEWN30L
(Max.114dB)



SEWN30T
(Max.114dB)

SEWN30 Series Electronic Sounders, Max.118dB

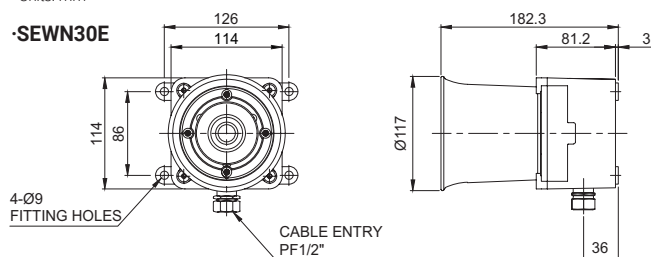
Model number	Voltage	Current	Sound pattern and volume	Certificates	Weight
SEWN30E Wall mount	DC12V	2.200A	·WS-5 Warning sounds : Max.114dB		SEWN30E DC-1.76kg AC-2.11kg
SEWN30L Self stand	DC24V	1.020A	·WP-5 Special warning sounds : Max.114dB		SEWN30L AC-1.74kg AC-2.13kg
SEWN30T Wall mount with terminal box	AC110V AC220V	0.265A 0.125A	·WM-5 Melodies: Max.110dB ·WA-5 Alarms: Max.114dB ·WV-5 Customizable voices : 108-113dB		SEWN30T DC-2.23kg AC-2.58kg

- ※ Please refer to [Sound tone and combination for standard product] on this catalogue for detailed sound tone specification
- ※ CE compliant : AC220V, DC24V
- ※ CCS compliant : SEWN30E only
- ※ Max.built-in volume feature is based on WS, WP-Ch1 / WM-Ch4 / WA-Ch4.
- ※ In case of customized WV 5 tone type, there may be difference of volume depending on user's audio file type.

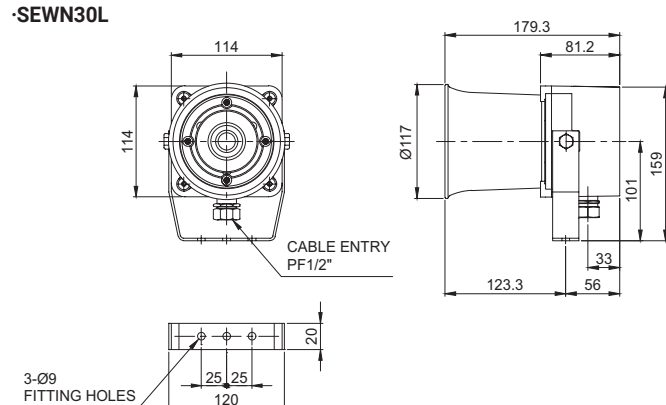
Technical Diagram

Units: mm

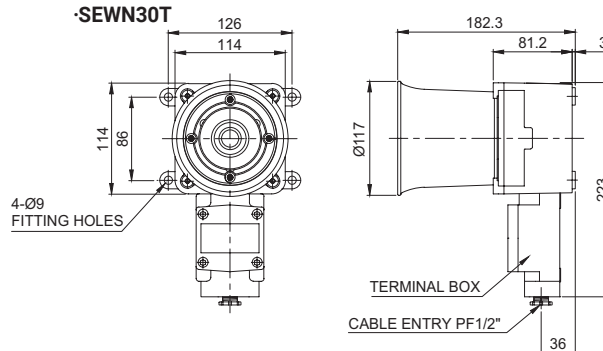
·SEWN30E



·SEWN30L



·SEWN30T



SEWN30 / SEWN50 Series

SEWN50 Series Electronic Sounders, Max.120dB

Model number	Voltage	Current	Sound pattern and volume	Certificates	Weight
SEWN50E Wall mount	DC12V	2.440A	·WS-5 Warning sounds : Max.120dB	CE	SEWN50E DC-4.22kg AC-4.52kg
SEWN50L Self stand	DC24V	1.180A	·WP-5 Special warning sounds : Max.120dB		SEWN50L AC-4.20kg AC-4.50kg
SEWN50T Wall mount with terminal box	AC110V	0.300A	·WM-5 Melodies: Max.115dB ·WA-5 Alarms: Max.118dB ·WV-5 Customizable voices : 109-117dB		SEWN50T DC-4.65kg AC-4.95kg
	AC220V	0.160A			

※ Please refer to [Sound tone and combination for standard product] on this catalogue for detailed sound tone specification

※ CE compliant : DC24V

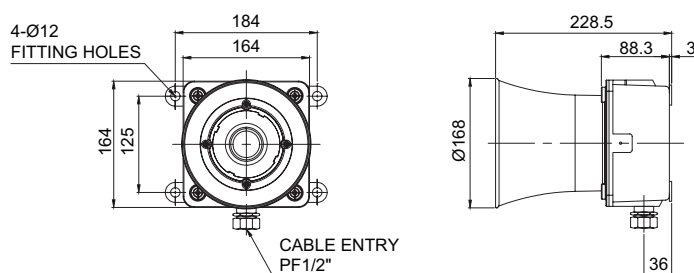
※ Max.built-in volume feature is based on WS, WP-Ch1 / WM-Ch5 / WA-Ch5.

※ In case of customized WV 5 tone type, there may be difference of volume depending on user's audio file type.

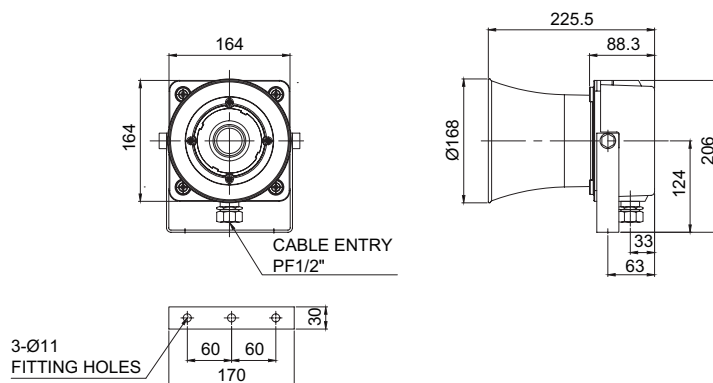
Technical Diagram

Units: mm

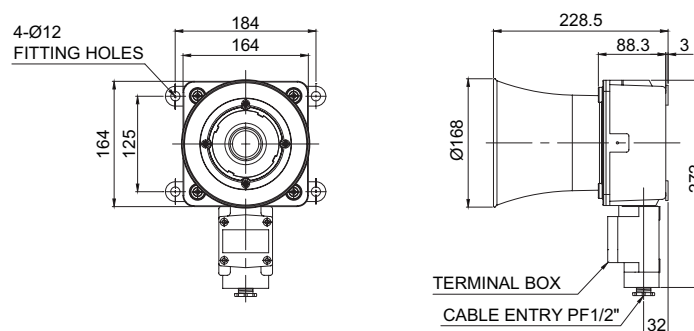
·SEWN50E



·SEWN50L



·SEWN50T



SEWN50E/ SEWN50L model uses flexible connector at cable entry and SEWN50T model uses 15C nipple at cable entry.
Cable gland is customizable



Flexible connector



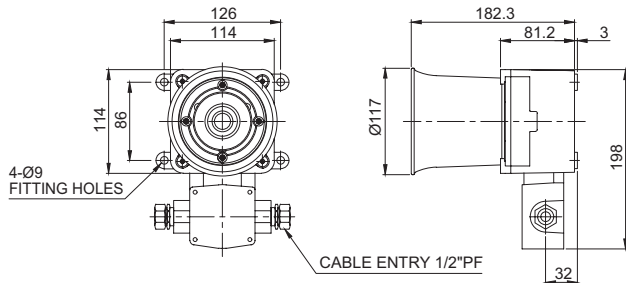
15C nipple



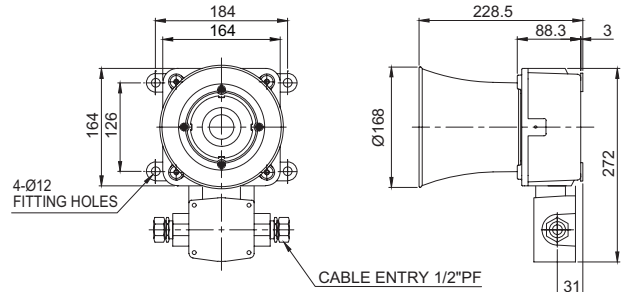
2 Cable Entries Terminal Box Type Technical Diagram

Units: mm

·SEWN30-2T

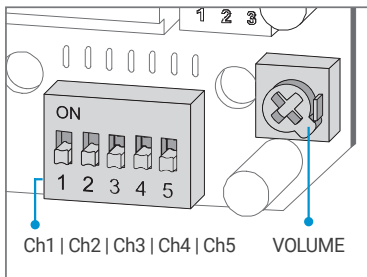


·SEWN50-2T



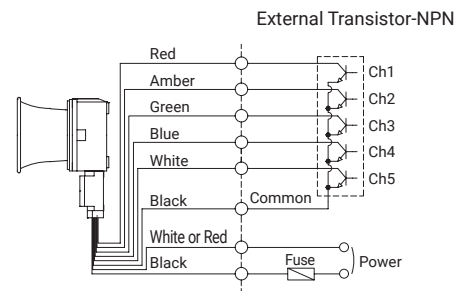
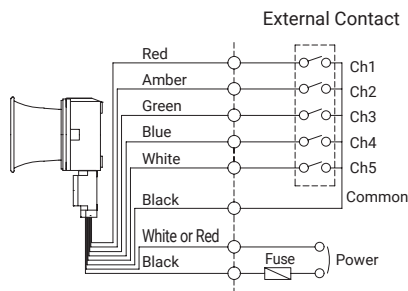
Sound Selection Instructions and Wiring

· Standard Type: Select sound using the switch inside of the unit. When you turn on the dip switch for each channel, the designated sound will be played.



·SEWN30E / SEWN30L / SEWN30T-DC/AC

·SEWN50E / SEWN50L / SEWN50T-DC/AC



- Customized type : Select sound using the external contact(LC)
You can select the audible sound pattern using external contacts or transistor with a customized external sound line(Model number : -LC)
- This product can be wired regardless of polarity.

Customization



Brass housing product



2 cable entries terminal box type

- Cable gland available
- 3/4"PF cable entry (Standard : 1/2"PF).
- 2 cable entries terminal box: Customized terminal box available with two cable entries in opposite directions(Model number : SEWN30-2T, SEWN50-2T)
- External threading of sound line (Model number : -LC)
- Brass housing product: Brass housing products provide improved corrosion resistance.
※ Color will be MUNSSELL No. 7.5BG 7/2 when released.
- Horn housing materials: STS316L

Ordering Specification

SEWN30T	-	WS	-	220	-	LC
[Model number]		[Sound]		[Voltage]		[sound selection]
SEWN30E		WS-Warning sounds		12-DC12V		None-Built-in switch
SEWN30L		WP-Special warning sounds		24-DC24V		LC-External contact
SEWN30T		WM-Melodies		110-AC110V		
SEWN50E		WA-Alarms		220-AC220V		
SEWN50L		WV-Customizable voices				
SEWN50T						