

## SNE-TI Series



SNELR-TI



SNEL-TI

### PRODUCT SPECIFICATION

SNELR-TI | SNEL-TI  
SNE-S-TI | SNE-TI

**Materials** Lens-Tempered glass, Filter-PC, Housing-Al, Protection cage-STSS316L, Reflector-PC, Reflector-Heat resistant ABS, Bracket-STSS316L

#### Ambient operating temperature

-40°C ≤ Tamb ≤ +60°C

#### Protection rating

IECEX - Ex db IIC T6 Gb,

Ex db op is IIC T6 Gb, IP66

ATEX - Ex II 2G Ex db IIC T6 Gb

Ex II 2G Ex db op is IIC T6 Gb, IP66

**Certificates** IECEX, ATEX

**Cable entry** 1/2" NPT

**Housing standard color** MUNSELL No. 7.5BG 7/2

- Light weight and compact explosion proof warning lights with a variety of light source selections from bulb, LED, and xenon lamp
- Telephone Initiated Signal beacon triggers lighting that is activated by 25Hz telephone ring signal
- Highly noticeable Telephone alarm in noisy environment
- Telephone line(2 LINE) is connected to PSTN telephone line
- A variety of light source selections from bulb, LED, and xenon lamp
- Aluminum housing provides excellent durability
- Fully enclosed structure with protection rating of IP66
- Integrated housing and terminal box model
- Rated power when telephone lines are not in use: 45VDC - 55VDC
- Rated power when telephone rings : 95VDC - 130VDC

### SNELR-TI LED Revolving Signal Beacon

Model number	Voltage	Current	Certificates	Weight	Color
SNELR-TI	DC12V	0.170A		3.15kg	● R-Red ● A-Amber ● G-Green ● B-Blue
	DC24V	0.120A		3.15kg	
	AC120V	0.045A		3.85kg	
	AC230V	0.040A		3.85kg	

- Excellent omni-directional visibility with LED light collecting system and special multifaceted reflector
- Revolving speed: 120-140RPM

### SNEL-TI LED Steady/Flashing Signal Beacon

Model number	Voltage	Current	Certificates	Weight	Color
SNEL-TI	DC12V	0.150A		3.65kg	● R-Red ● A-Amber ● G-Green ● B-Blue
	DC24V	0.090A		3.65kg	
	AC120V	0.065A		4.30kg	
	AC230V	0.025A		4.30kg	

- Long-lasting high intensity LED light source, Suitable for applications where bulb replacement is hard
- Built-in steady/flashing selection switch
- Flashing rate: 60-80 flashes/min



## SNE-S-TI Xenon Strobe Signal Beacon

Model number	Voltage	Current	Xenon lamp			Certificates	Weight	Color
			Spec	Standard	Parts no			
SNE-S-TI	DC12V	0.480A	200V -350V	BGA2120 -BBC I type	47		3.60kg	● R-Red
	DC24V	0.300A					3.60kg	● A-Amber
	AC120V	0.100A					4.25kg	● G-Green
	AC230V	0.080A					4.25kg	● B-Blue

- Lamp connector fastening structure allows for convenient lamp replacement
- Excellent long-distance visibility with strong strobe signal diffusion
- Flashing rate: 60-80 flashes/min

## SNE-TI Bulb Revolving Signal Beacon

Model number	Voltage	Current	Bulb			Certificates	Weight	Color
			Spec	Standard	Parts no			
SNE-TI	DC12V	1.390A	12V15W	G23 15S	17		3.25kg	● R-Red
	DC24V	0.800A	24V15W	G23 15S	18		3.25kg	● A-Amber
	AC120V	0.180A	12V15W	G23 15S	17		3.95kg	● G-Green
	AC230V	0.095A	12V15W	G23 15S	17		3.95kg	● B-Blue

- Excellent diffusion effect with special multifaceted reflector
- Revolving speed: 120-140RPM



SNE-S-TI

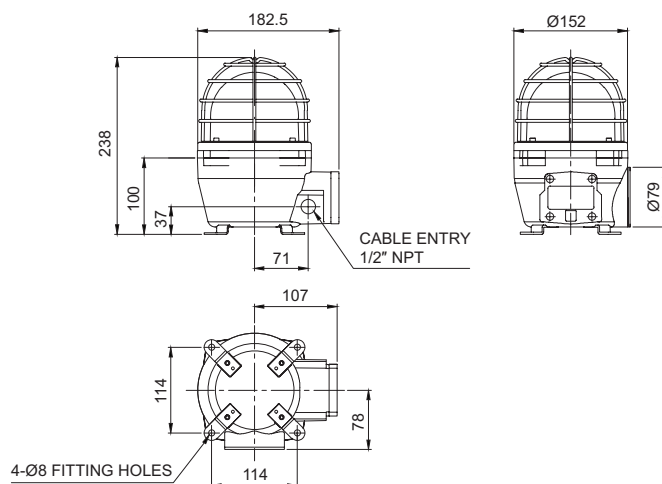


SNE-TI

### Technical Diagram

Units: mm

· SNELR-TI / SNEL-TI / SNE-S-TI / SNE-TI



### Ordering Specification

SNE	-	230	-	R	-	TI
[Model number]		[Voltage]		[Color]		[Telephone Initiated]
SNELR		12-DC12V		● R-Red		TI-Telephone Initiated
SNEL		24-DC24V		● A-Amber		
SNE-S		120-AC120V		● G-Green		
SNE		230-AC230V		● B-Blue		

### Customization

- Explosion proof cable gland attached type available (Standard type does not come with explosion proof cable gland)
- 2 ways cable entries
- Customized cable entry (M20×1.5) available