

# Ø130mm Explosion Proof Signal Beacon with Siren Buzzer(Telephone Initiated)

## SNES-S-TI



SNES-S-TI

### PRODUCT SPECIFICATION

SNES-S-TI

**Materials** Lens-Tempered glass, Filter-PC, Housing-Al, Protection cage-STSS316L, Bracket-STSS316L

**Ambient operating temperature**

-40°C ≤ Tamb ≤ +60°C

**Sound volume** Max.105dB at 1m(Volume adjustable)

**Protection rating**

IECEX - Ex db IIC T6 Gb,

Ex db op is IIC T6 Gb, IP66

ATEX - II 2G Ex db IIC T6 Gb

II 2G Ex db op is IIC T6 Gb, IP66

**Certificates** IECEX, ATEX

**Cable entry** 1/2" NPT

**Housing standard color** MUNSELL No. 7.5BG 7/2

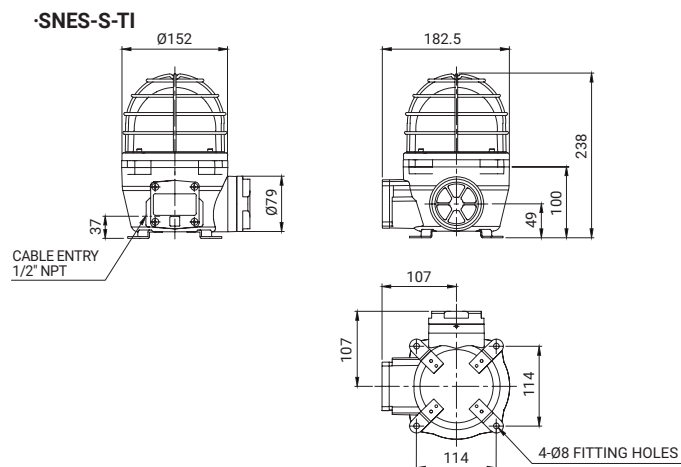
- Light weight and compact explosion proof signal beacon with siren buzzer
- Telephone initiated signal beacon triggers built-in alarm sound that is activated by 25Hz telephone ring signal
- Highly noticeable telephone alarm in noisy environment
- Telephone line(2 LINE) is connected to PSTN telephone line
- Aluminum housing provides excellent durability
- Fully enclosed structure with protection rating of IP66
- Integrated housing and terminal box model
- Rated power when telephone lines are not in use: 45VDC - 55VDC
- Rated power when telephone rings: 95VDC - 130VDC

### SNES-S-TI Xenon Strobe Signal Beacon with Siren Buzzer

Model number	Voltage	Current	Xenon lamp			Certificates	Weight	Color	Color
			Spec	Standard	Parts no				
SNES-S-TI	DC12V	0.590A	200V -350V	BGA2120	47	Warning sounds (Buzzer) : Max.105dB	IECEX ATEX	3.60kg	R-Red
	DC24V	0.450A		-BBC				3.60kg	A-Amber
	AC120V	0.140A		I type				4.25kg	G-Green
	AC230V	0.080A						4.25kg	B-Blue

### Technical Diagram

Units: mm



### Customization

- Explosion proof cable gland attached type available (Standard type does not come with explosion proof cable gland)
- 2 ways cable entries
- M20x1.5 cable entry

### Ordering Specification

SNES-S	-	230	-	R	-	TI
[Model number]		[Voltage]		[Color]		[Telephone Initiated]
SNES-S		12-DC12V 24-DC24V 120-AC120V 230-AC220V		R-Red A-Amber G-Green B-Blue		TI-Telephone Initiated