

# GW768



## PRODUCT SPECIFICATION

GW768(GATEWAY)

Materials ABS

Ambient operating temperature -25°C to +50°C

Compliant with RoHS directive



GW768(GATEWAY)

- A device that receives data from a wireless signal information device, suitable for a small single wireless network.
- Controlling of wireless signal information devices through two-way communication
- Up to 32ea of wireless signal information devices can be connected per gateway
- Up to 24ea of device can be connected via LAN using Ethernet communication (Maximum 768ea of wireless signal information devices can be connected)
- Information transmission to administrators and controlling real-time using a mobile app
- Wireless communication standard: IEEE 802.15.4 Standard
- Data rate: 250Kbps

## GW768(GATEWAY) Wireless network system receiving device

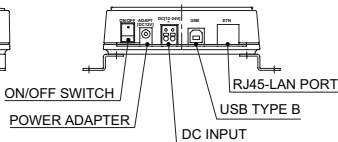
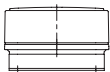
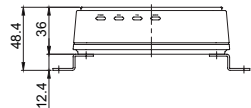
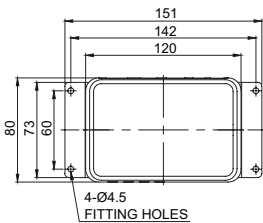
Model number	Voltage	Current	Interface	Wireless standard	Radio frequency/ number of channels	Certificates	Weight
GW768	DC12-24V	Max. 0.510A	USB2.0 /Ethernet	IEEE 802.15.4 Standard	2405MHz-2480MHz(16ch)		0.25kg
	AC110-220V	Max. 0.115A					

※ KC compliant: DC12V

## Technical Diagram

GW768

Units : mm



## Ordering Specifications

GW768	-	12/24
[Model number]		[Voltage]
GW768		12/24-DC12V-24V 110/220-AC110V-220V