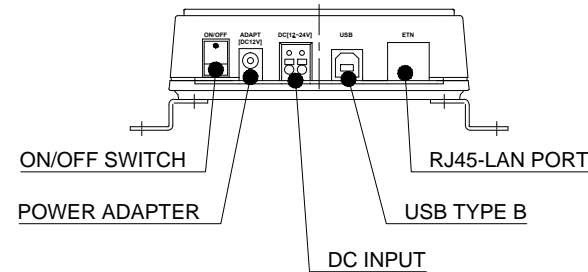
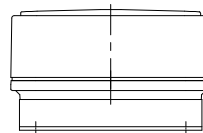
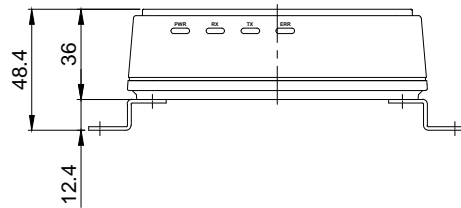
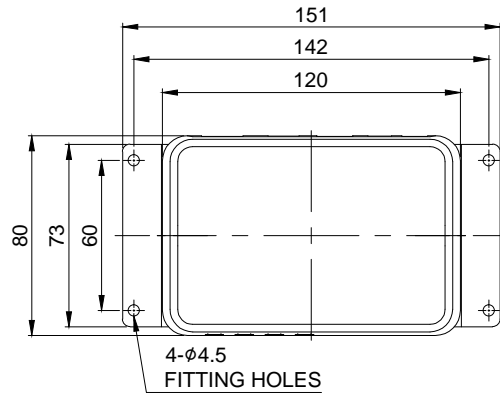




MARK	DATE	REVISION	REVISER	APP .BY
1				
2				
3				

MODEL NO	GATE WAY-GW768
MATERIAL	COVER-ABS
	BODY-ABS
	INDICATOR-PC
	BRACKET-SUS430
RATED VOLTAGE	DC24V/AC110V~AC220V
CURRENT CONSUMPTION	Max. 0.230A/ Max. 0.110A
CERTIFICATION	KN32/35 ,KN301489, Zigbee
EXTERNAL INTERFACE	USB2.0/ Ethernet(Conforms to the IEEE 802.3)
TELECOMMUNICATION PROTOCOL	IEEE 802.15.4 Standard
FREQUENCY RANGE	2.405GHz ~ 2.480GHz(16Channel)
TRANSMITTER OUTPUT	Less than 10mW/Mhz



ISO2768-1 : CLASS OF TOLERANCE						SURFACE FINISH	-	-	-	-	1	-
FOR LINEAR DIMENSIONS		f	m	Ⓒ	v		Nr.	DWG. NO.	TITLE/ NAME		MAT'L	QTY
	0.5~3	±0.05	±0.1	±0.2	-	DSND BY J.H.PARK	CHKD BY J.H.PARK	CHKD BY 	APRV BY J.K.HAN	VIEW 3	DATE 2019.05.24	
	3~6			±0.3	±0.5							
	6~30	±0.1	±0.2	±0.5	±1							
	30~120	±0.15	±0.3	±0.8	±1.5							
	120~400	±0.2	±0.5	±1.2	±2.5							
400~1000	±0.3	±0.8	±2	±4								
FOR ANGULAR DIMENSIONS	0~10	±1°		±1°30'	±3°							
	10~50	±0°30'		±1°	±2°							
	50~120	±0°20'		±0°30'	±1°							
	120~400	±0°10'		±0°13'	±0°30'							
TITLE						GATE WAY-GW768 OUTLINE DRAWING			MODEL		WIZ SERIES	
									DWG. NO. GATE WAY-GW768_OUT			
									SCALE N/S	SIZE A4	REV 00	SHEET 1/1

Qlight

A4(297X210)