



PRODUCT SPECIFICATION

EMCL50U

Materials Housing-Al, Lens-PC**Ambient operating temperature** -25°C to +55°C**Volume** Max. 85dB at 1m**Protection rating**

Standard type-IP67, Built-in buzzer type-IP20

- Small indicator light capable of transmitting three signal colors with one indicator light
- By applying a milky translucent lens, the unique color of the LED is emitted subtly when turned on
- Buzzer specifications can be selected for signal wire withdrawal type or M12 connector mounting type



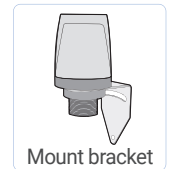
EMCL50U

Bracket

- It can be installed on the wall by adopting wall mounting type bracket.



Φ32 type

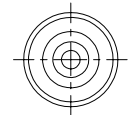
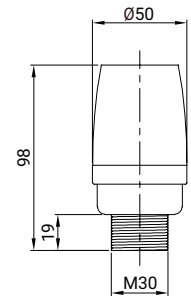


Mount bracket

Technical Diagram

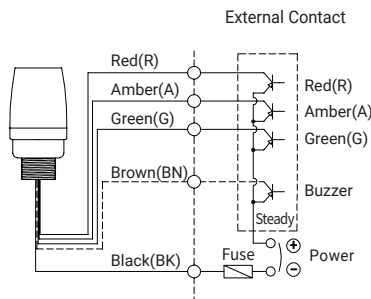
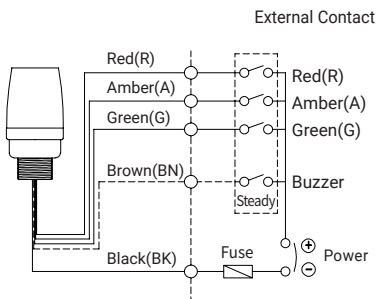
Units: mm

- EMCL50U / EMCL50U-BZ



Wiring Instructions

- EMCL50U / EMCL50U-BZ



M12 connector equipped

5PIN CONNECTOR	No.	Color	Wiring
1	1	RED	Pin 1
2	2	AMBER	Pin 2
3	3	GREEN	Pin 3
4	4	Common	Pin 4
5	5	Buzzer	Pin 5

Ordering Specification

EMCL50U	-	24	-	RAG	-	M12
[Model number]		[Voltage]		[Color]		[Cable]
EMCL50U EMCL50U-BZ		24-DC24V		● R-Red ● A-Amber ● G-Green		None-External contact M12-M12 connector type

Customization

- M12 Five- Core Cable/1.5m
- NPN type