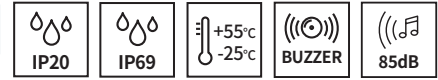


EMCL50A / EMCL50B



PRODUCT SPECIFICATION

EMCL50A | EMCL50B

Materials Housing-Al, Lens-PC
Ambient operating temperature -25°C to +55°C
Volume Max. 85dB at 1m
Protection rating
 Standard type-IP69, Built-in buzzer type-IP20

- Small indicator light capable of transmitting three signal colors with one indicator light
- By applying a milky translucent lens, the unique color of the LED is emitted subtly when turned on
- Buzzer specifications can be selected for signal wire withdrawal type or M12 connector mounting type




EMCL50A



EMCL50B

EMCL50A / EMCL50B Industrial LED beacon

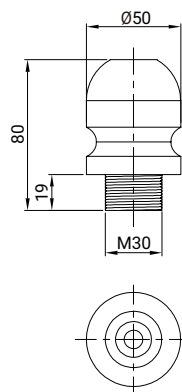
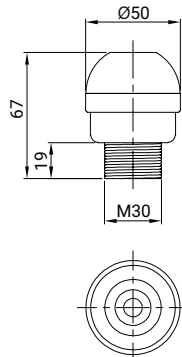
Model number	Voltage	Current	Certificates	Weight	Color	
EMCL50A Steady	DC24V	41mA		0.14kg	<div><div></div> R-Red <div></div> A-Amber <div></div> G-Green</div>	
EMCL50A-BZ Steady w/built-in buzzer						
EMCL50B Steady						
EMCL50B-BZ Steady w/built-in buzzer				0.21kg		

• EMCL50A / EMCL50A-BZ

• EMCL50B / EMCL50B-BZ

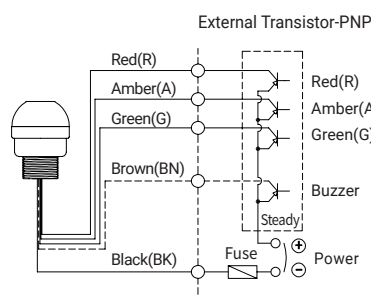
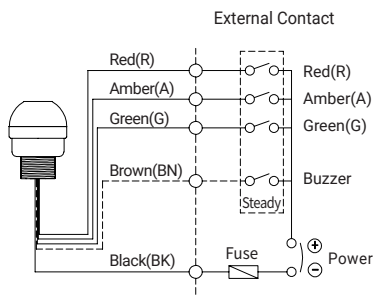
Technical Diagram

Units: mm



Wiring Instructions

- EMCL50A / EMCL50A-BZ
- EMCL50B / EMCL50B-BZ

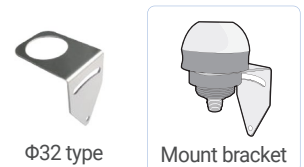


Ordering Specification

EMCL50A	-	24	-	RAG	-	M12
[Model number]		[Voltage]		[Color]		[Cable]
EMCL50A EMCL50A-BZ EMCL50B EMCL50B-BZ		24-DC24V		<div></div> R-Red <div></div> A-Amber <div></div> G-Green		None-External contact M12-M12 connector type

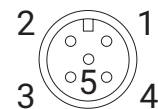
Bracket

- It can be installed on the wall by adopting wall mounting type bracket.



M12 connector type

5PIN CONNECTOR



No.	Color	Wiring
1	RED	Pin 1
2	AMBER	Pin 2
3	GREEN	Pin 3
4	Common	Pin 4
5	Buzzer	Pin 5

Customization

- M12 Five- Core Cable/1.5m
- NPN type