



EBL

## PRODUCT SPECIFICATION

EBL

### Materials

Housing-Al, Lens-Tempered glass, Bracket-STs

Ambient operating temperature -25°C to +55°C

Protection rating IP67

- Waterproof, dustproof, oil-resistant LED economy type work light
- Excellent oil resistance in machine tools where high-temperature cutting oil is used
- Low power consumption and long life by using high-efficiency LED
- Among body lengths of 300/500/600mm, select a suitable specification according to the lighting range and installation space
- 1.5m cable withdrawal type is standard specification, M12 connector mounting type can be selected as an order specification

### EBL LED Work Lights

Optics Specifications			
Model number	EBL300	EBL500	EBL600
Lens Color	Transparent		
Light color	Cooldaylight		
Directions	6,000-6,500K		
Luminous flux	DC	-	1,500lm
	AC	1,000lm	-
Efficacy (lm/W)	DC	-	700Lux
	AC	300Lux	-

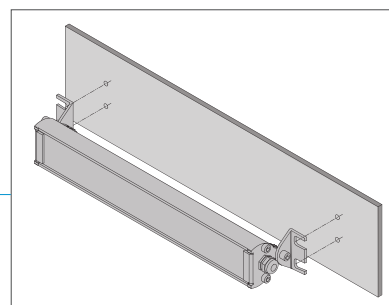
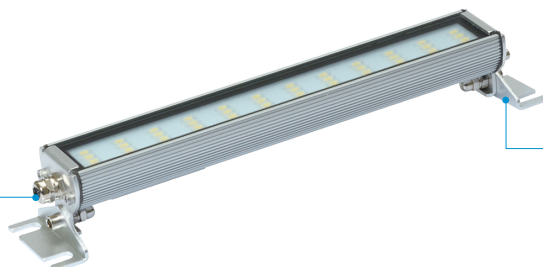
  

Specifications			
Model number	EBL300	EBL500	EBL600
Voltage	AC220V	DC24V	DC24V
Range for operation voltage	AC200~240V	DC24V	DC24V
Power consumption	DC24V	15W	18W
	AC220V	10W	-
Insulation resistance	Min. 100MΩ(500V DC mega ohm meter)		
Withstanding voltage	DC: 500VAC, 60Hz, 1 minute/AC: 1,500VAC, 60Hz, 1 minute		
Operating temperature	-25°C to +55°C		
Protection rating	IP67		
Materials	Housing-Al, Lens-Tempered glass, Bracket-STs		
Certification	CE		
Weight(Approx.)	0.50kg	0.70kg	0.80kg

※ CE compliant : DC24V

### Structural features

M12 connector

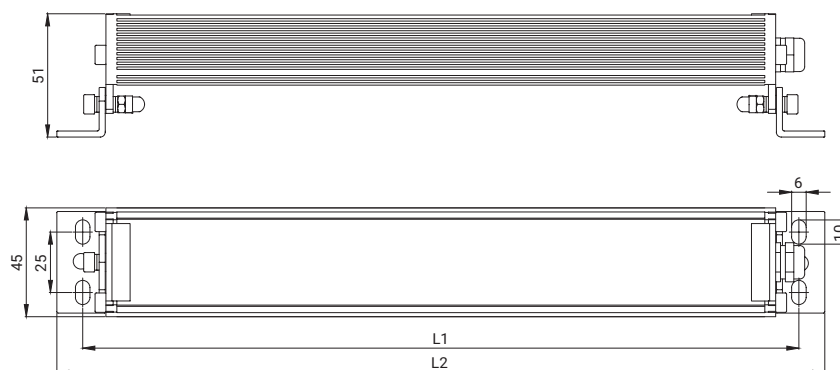


Mount bracket



## Technical Diagram • EBL

Units: mm



Model number	L1	L2
EBL300	296	316
EBL500	508	528
EBL600	584	604

## Ordering Specification

EBL	-	300	-	24
[Model number]		[Product length]		[Voltage]
EBL		300-316mm 500-528mm 600-604mm		24-DC24V 220-AC220V