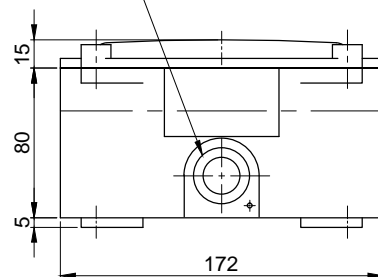


CABLE ENTRY 1/2" NPT



MARK	DATE	REVISION	REVISER	APP .BY
①				J.K.HAN
②				
③				

MODEL NO			SSEL			
MATERIAL			HOUSING-AL			
			LENS-TEMPERED GLASS			
COLOR OF LENS			RED(), AMBER(), GREEN(), BLUE()			
USE VOLT.	LED	CURRENT	DC12V	-	MAX. 0.466A	
			DC24V		MAX. 0.255A	
			AC110V		MAX. 0.040A	
			AC220V		MAX. 0.040A	
PROTECTION GRADE			Ex d IIC T6, IP66			
CABLE ENTRY			1/2" NPT			
COLOR OF HOUSING			MUNSELL NO. 7.5BG 7/2			
ACTION			LED PERIMETER LIGHT			

ISO2768-1 : CLASS OF TOLERANCE						SURFACE FINISH		-	-	-	1	-
FOR LINEAR DIMENSIONS		f	m	(C)	v			Nr.	DWG. NO.	TITLE/ NAME	MAT'L	REFERENCE
	0.5~3	±0.05	±0.1	±0.2	-			DSND BY	CHKD BY	CHKD BY	APRV BY	VIEW
	3~6			±0.3	±0.5			S.H.KIM	J.H.PARK		J.K.HAN	DATE
	6~30	±0.1	±0.2	±0.5	±1							3
	30~120	±0.15	±0.3	±0.8	±1.5							2016.08.30
	120~400	±0.2	±0.5	±1.2	±2.5							
FOR ANGULAR DIMENSIONS	400~1000	±0.3	±0.8	±2	±4			TITLE			MODEL	
	0~10	±1°	±1°30'	±3°				SSEL			SSEL	
	10~50	±0°30'	±1°	±2°				OUTLINE DRAWING			DWG. NO.	
	50~120	±0°20'	±0°30'	±1°				Qlight			SSEL_OUT	
	120~400	±0°10'	±0°13'	±0°30'							SCALE	SHEET
								N/S	A4	REV	00	1/1

A4(297X210)