

Basic Waterproof LED Light Bars

QPL / QPLC / QPHL / QPHLC

Waterproof LED light bars, suitable for dusty and moisture environments



QPL / QPHL
Translucent lens



QPLC / QPHLC
Transparent lens

PRODUCT SPECIFICATION

QPL | QPLC
QPHL | QPHLC

Materials Lens-PC, Side cover-ABS, Heatsink-Al



Ambient operating temperature -30°C to +50°C

Protection rating IP65

Certificates CE, UL

- Fully enclosed structure with protection rating of IP65, suitable for environments which have lingering dust or moisture
- Maintains bright intensity illumination from dust resistant lens
- Beautiful appearance with dome type lens
- Slim thickness 24mm adopted AC direct LED control system
- 4 kinds of products length 200/300/400/500mm
- Selectable lens between translucent and transparent based on condition
- Standard entry cable included. Can customize the product with the M12 connector if requested(Female M12 connector is not provided)

QPL / QPLC Basic Waterproof LED Light Bars

Optics Specifications									
Model number		QPL-200	QPLC-200	QPL-300	QPLC-300	QPL-400	QPLC-400	QPL-500	QPLC-500
Directions		Translucent	Transparent	Translucent	Transparent	Translucent	Transparent	Translucent	Transparent
Light color		Cooldaylight							
Color temperature		6,000-7,000K							
Luminous flux	DC	150lm	180lm	240lm	250lm	350lm	440lm	480lm	600lm
	AC	-	-	380lm	440lm	550lm	650lm	840lm	900lm
Illumination (at 1m)	DC	50Lux	65Lux	80Lux	100Lux	120Lux	150Lux	150Lux	200Lux
	AC	-	-	130Lux	150Lux	200Lux	240Lux	300Lux	350Lux
Specifications									
Model number		QPL-200 / QPLC-200		QPL-300 / QPLC-300		QPL-400 / QPLC-400		QPL-500 / QPLC-500	
Voltage		DC24V		DC24V		DC24V		DC24V	
				AC 110V/220V		AC 110V/220V		AC 110V/220V	
Range for operation voltage		DC21.5V-26.5V, AC98V-121V, AC198V-245V							
Power consumption	DC24V	3.7W		3.7W		5.5W		7.3W	
	AC110V	-		4.5W		7.5W		10W	
	AC220V	-		6.5W		9.5W		13W	
Insulation resistance		Min. 100MΩ(500V DC mega ohm meter)							
Withstanding voltage		DC: 500VAC, 60Hz, 1 minute/AC: 1,500VAC, 60Hz, 1 minute							
Operating temperature		-30°C to +50°C							
Protection rating		IP65							
Materials		Lens-PC, Side cover-ABS, Heatsink-Al							
Certification		 							
Weight(Approx.)	0.13kg		0.15kg		0.21kg		0.24kg		
			0.15kg		0.21kg		0.24kg		

※ CE compliant: DC24V, AC220V, UL Listed: DC24V

QPHL / QPHLC Basic Waterproof LED Light Bars

Optics Specifications									
Model number	QPHL-200	QPHLC-200	QPHL-300	QPHLC-300	QPHL-400	QPHLC-400	QPHL-500	QPHLC-500	
Directions	Translucent	Transparent	Translucent	Transparent	Translucent	Transparent	Translucent	Transparent	
Light color	Cooldaylight								
Color temperature	6,000-7,000K								
Luminous flux	DC	320lm	340lm	450lm	480lm	650lm	640lm	900lm	1,000lm
	AC	-	-	440lm	440lm	650lm	640lm	900lm	900lm
Illumination (at 1m)	DC	200Lux	800Lux	300Lux	1,000Lux	400Lux	1,500Lux	550Lux	2,000Lux
	AC	-	-	250Lux	1,000Lux	400Lux	1,500Lux	550Lux	2,300Lux

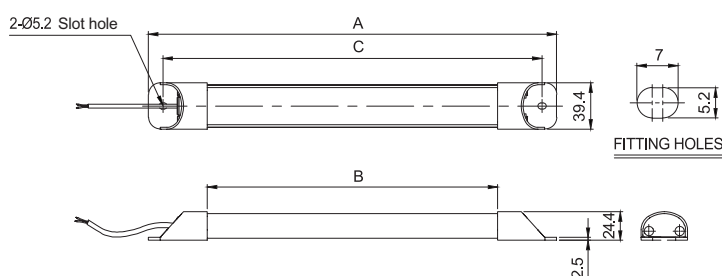
Specifications					
Model number	QPHL-200 / QPHLC-200		QPHL-300 / QPHLC-300	QPHL-400 / QPHLC-400	QPHL-500 / QPHLC-500
Voltage	DC24V	DC24V		DC24V	DC24V
		AC 110V/220V		AC 110V/220V	AC 110V/220V
Range for operation voltage		DC21.5V-26.5V, AC98V-121V, AC198V-245V			
Power consumption	DC24V	4.8W	5.5W	8W	10W
	AC110V	-	5W	8W	12W
	AC220V	-	8W	11W	15W
Insulation resistance			Min. 100MΩ(500V DC mega ohm meter)		
Withstanding voltage			DC: 500VAC, 60Hz, 1 minute/AC: 1,500VAC, 60Hz, 1 minute		
Operating temperature			-30°C to +50°C		
Protection rating			IP65		
Materials			Lens-PC, Side cover-ABS, Heatsink-Al		
Certifications		-	CE UL		
Weight(Approx.)	0.13kg	0.22kg		0.31kg	0.41kg
		0.23kg		0.32kg	0.42kg

※ CE compliant: DC24V, AC220V, UL Listed: DC24V(Except QPHL(C)-200)

Technical Diagram

Units: mm

·QPL / QPHL-200/300/400/500
·QPLC / QPHLC-200/300/400/500

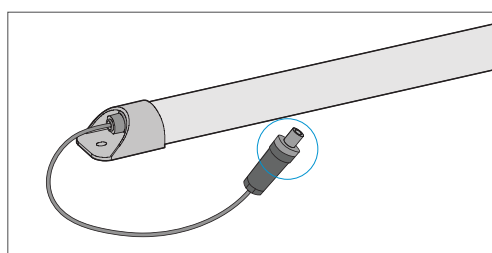


MODEL	A	B	C
QPL / QPHL / QPLC / QPHLC-200	200	100	175
QPL / QPHL / QPLC / QPHLC-300	300	200	275
QPL / QPHL / QPLC / QPHLC-400	400	300	375
QPL / QPHL / QPLC / QPHLC-500	500	400	475

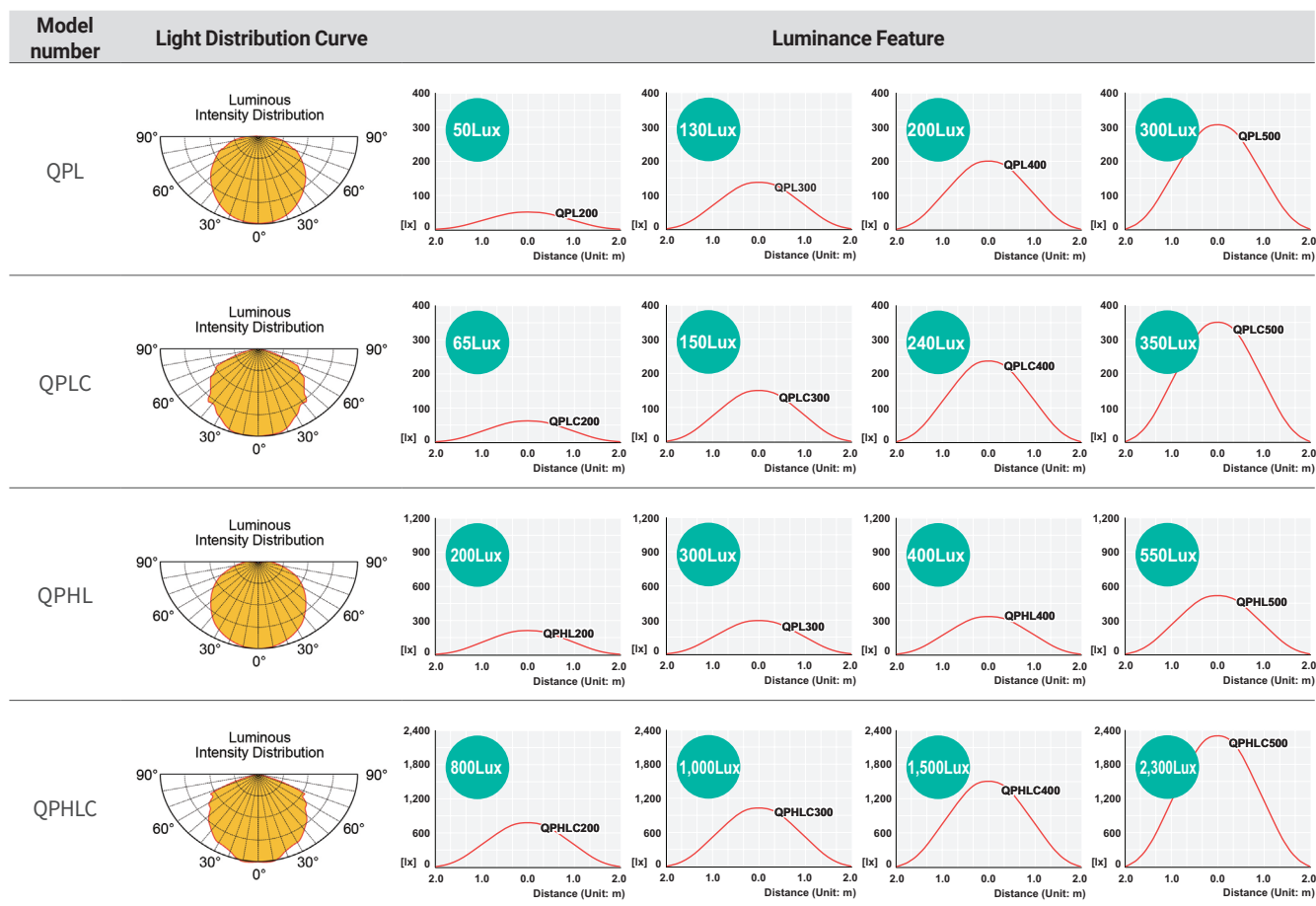
· External power line DC TYPE - UL2464 AWG22(0.3sq x 2C) 450mm
AC TYPE - VCTFK(0.75sq x 2C) 450mm

M12 connector equipped (Customization)

· Customized Cable end M12 connector attached type available.



Light Distribution and Illuminance



Ordering Specification

QPL	-	500	-	24
[Model number]		[Product length]		[Voltage]
QPL-Translucent lens		200-200mm		24-DC24V
QPLC-Transparent lens		300-300mm		110-AC110V
QPHL-High illumination translucent lens		400-400mm		220-AC220V
QPHLC-High illumination transparent lens		500-500mm		