

Provides excellent durability to extreme vibration and shock

## PRODUCT SPECIFICATION

SSL

**Materials** Housing-Al, Lens-PC  
**Ambient operating temperature** -30°C to +60°C  
**Protection rating** IP68(IEC60529)

- Special anti-reflective lens applied to avoid mistaking the reflected sun light as a signal light (W type)
- M type has excellent visibility from a distance with clear and distinctive layer colors
- Superior durability in extreme vibration and shock thanks to molding assembly between aluminum housing and lens
- Customized color arrangement available(Lens color configuration is initiated from the side of cable entry)



SSL100W / SSL200W  
 SSL300W / SSL400W

## SSL LED Steady Signal Lights for Container Spreaders

Model number	Voltage	Current	Certificates	Weight	Cable Entry	Color
SSL100	DC24V	0.150A	CE	1.80kg	M12-5PIN(male) C10-Cable	● R-Red ● A-Amber ● G-Green ● B-Blue ○ W-White
	AC110V	0.045A		1.85kg		
	AC220V	0.045A		1.85kg		
SSL200	DC24V	0.300A		2.15kg		
	AC110V	0.090A		2.20kg		
	AC220V	0.090A		2.20kg		
SSL300	DC24V	0.450A		2.50kg		
	AC110V	0.135A		2.55kg		
	AC220V	0.135A		2.55kg		
SSL400	DC24V	0.600A		2.95kg		
	AC110V	0.180A		3.00kg		
	AC220V	0.180A		3.00kg		

※ CE compliant: DC24V

※ M12-5PIN connector: Female M12 connector is not provided.



SSL100M / SSL200M  
 SSL300M / SSL400M

## SSL Series Vibration and Shock Test Conditions

Axial direction	Direction X	Direction Y	Direction Z
Vibration test conditions	10-38 Hz, 3.5mm 38-500 Hz, 20g 1 oct/min, 2 hours	10-38 Hz, 3.5mm 38-500 Hz, 20g 1 oct/min, 2 hours	10-38 Hz, 3.5mm 38-500 Hz, 20g 1 oct/min, 2 hours
Shock test conditions	50g 6 ms ±1000 shocks	50g 6 ms ±1000 shocks	50g 6 ms ±1000 shocks

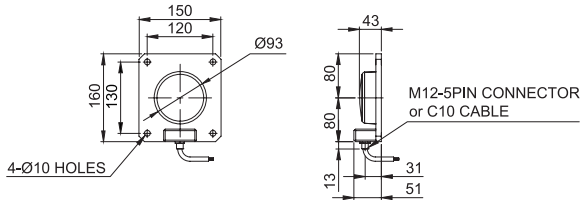
## Ordering Specification

SSL100W	-	24	-	R
[Model number]		[Voltage]		[Color]
SSL100W / SSL100M		24-DC24V		● R-Red
SSL200W / SSL200M		110-AC110V		● A-Amber
SSL300W / SSL300M		220-AC220V		● G-Green
SSL400W / SSL400M				● B-Blue
				○ W-White

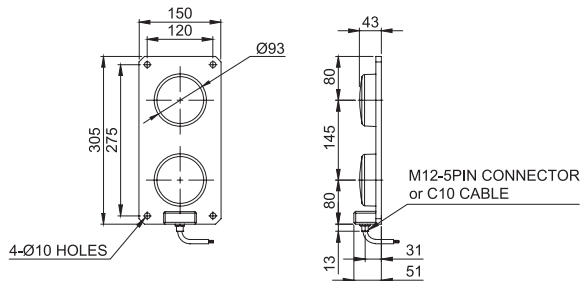
### Technical Diagram

Units: mm

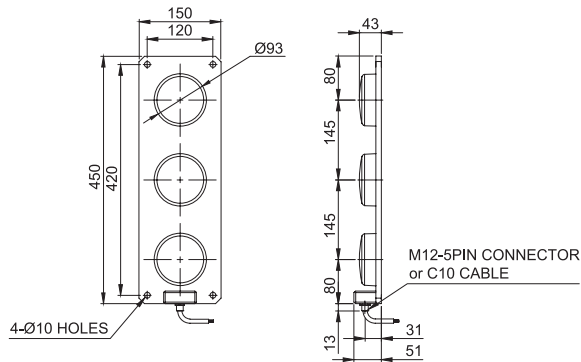
#### ·SSL100W / SSL100M



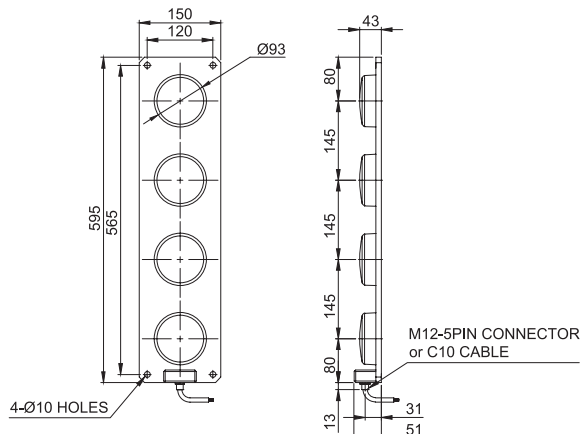
#### ·SSL200W / SSL200M



#### ·SSL300W / SSL300M

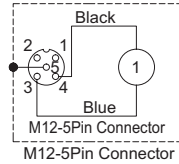


#### ·SSL400W / SSL400M

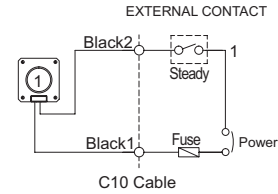


### Wiring Instructions

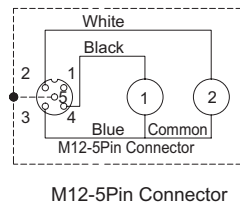
#### ·SSL100W / SSL100M



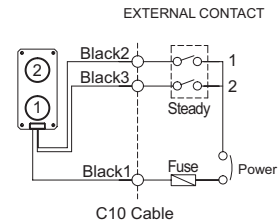
- M12-5PIN connector type  
Pin no. 3 is common, however equipped built-in Bridge circuit, power line can be wired to Pin no.3 or 4 regardless of polarity
- C10 CABLE TREADING TYPE  
Treading power line, signal line standard : 7G×0.5mm<sup>2</sup> 600V/80°C I WIRE 1,000mm treading



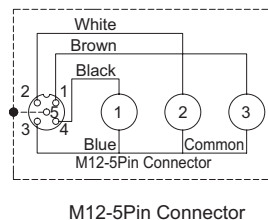
#### ·SSL200W / SSL200M



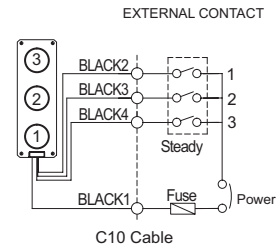
- M12-5PIN connector type  
Pin no. 3 is common, however equipped built-in Bridge circuit, power line can be wired to Pin no.3 or 2, 4 regardless of polarity
- C10 CABLE TREADING TYPE  
Treading power line, signal line standard : 7G×0.5mm<sup>2</sup> 600V/80°C I WIRE 1,000mm treading



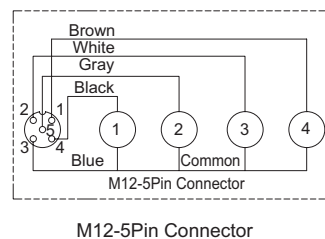
#### ·SSL300W / SSL300M



- M12-5PIN connector type  
Pin no. 3 is common, however equipped built-in Bridge circuit, power line can be wired to Pin no.3 or 1, 2, 4 regardless of polarity
- C10 CABLE TREADING TYPE  
Treading power line, signal line standard : 7G×0.5mm<sup>2</sup> 600V/80°C I WIRE 1,000mm treading



#### ·SSL400W / SSL400M



- M12-5PIN connector type  
Pin no. 3 is common, however equipped built-in Bridge circuit, power line can be wired to Pin no. 3 and pin no. 1, 2, 4, 5 regardless of polarity
- C10 CABLE TREADING TYPE  
Treading power line, signal line standard : 7G×0.5mm<sup>2</sup> 600V/80°C I WIRE 1,000mm treading

