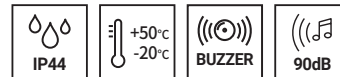


# Ø150mm Large Sized Warning Lights

## S150 Series



### PRODUCT SPECIFICATION

S150U | S150ULR  
S150U-FT | S150ULR-FT

**Materials** Lens-PC, Housing-ABS, Reflector-PC,  
Reflector-Heat resistant ABS, Mounting bracket-STS316L  
**Ambient operating temperature** -20°C to +50°C  
**Volume** Max.90dB at 1m  
**Protection rating** IP44  
**Revolving speed** 120-140RPM

- Special Power transmission system which allows low noise and less wear
- Mounting bracket allows convenient installation in case of XXX-FT type
- Can select between standard and built-in buzzer type depending on installation environment

### S150U / S150U-FT Bulb Revolving Warning Light

Model number	Voltage	Current	Bulb			Certificates	Weight	Color
			Spec	Standard	Parts no			
S150U S150U-FT	DC12V	1.500A	12V15W	G23 15S	17	CE	0.65kg	R-Red
	DC24V	0.850A	24V15W	G23 15S	18		0.65kg	A-Amber
	AC110V	0.200A	12V15W	G23 15S	17		1.04kg	G-Green
	AC220V	0.100A	12V15W	G23 15S	17		1.04kg	B-Blue

- Suitable for Long distance signal transmission by adopting high capacity bulb and large sized reflector
- ※ CE compliant: DC12V, DC24V

### S150ULR / S150ULR-FT LED Revolving Warning Lights

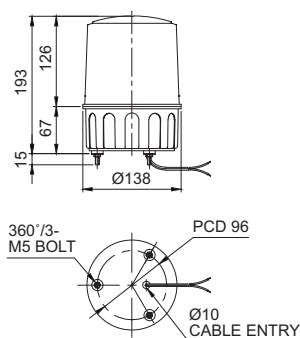
Model number	Voltage	Current	Certificates	Weight	Color
S150ULR S150ULR-FT	DC12V	0.520A	-	0.66kg	R-Red
	DC24V	0.260A		0.66kg	A-Amber
	AC110V	0.080A		0.85kg	G-Green
	AC220V	0.045A		0.85kg	B-Blue

- Excellent omni-directional visibility with LED light collecting system and special multifaceted reflector

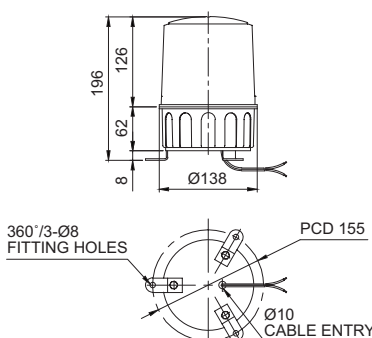
### Technical Diagram

Units: mm

#### ·S150U / S150ULR



#### ·S150U-FT / S150ULR-FT



### Ordering Specification

S150U	BZ	220	R
[Model number]	[Buzzer option]	[Voltage]	[Color]
S150U	(None)	12-DC12V	R-Red
S150U-FT	- No buzzer	24-DC24V	A-Amber
S150ULR	BZ	110-AC110V	G-Green
S150ULR-FT	- Built-in buzzer	220-AC220V	B-Blue



S150U



S150ULR-FT

### Wiring Instructions

- External Power line  
UL1015 AWG18(0.75sq) x 2C 400mm
- DC Type  
: Black output line is negative (-)
- S150U AC specifications:  
110VAC model is connected to black and white wires while 220VAC model is connected to black and red wires.
- S150ULR AC specifications:  
AC110V and AC220V can be selected with a built-in 110/220V switch.

### Customization

- 2 buzzer sound types: Both prolonged (beep, beep) and staccato (beep, beep, beep) buzzer output available
- AC voltage switch built-in type:  
AC110V and AC220V can be selected with a built-in 110/220V switch.