

QMCL Series

Multi-Color Warning Light with Seven Color Options



QMCL60



QMCL100

PRODUCT SPECIFICATION

QMCL60 | QMCL80
QMCL100 | QMCL125

Materials Lens-PC, Body-ABS

Ambient operating temperature -30°C to +50°C

Volume Max.80dB at 1m

Protection rating IP65

Compliant with RoHS directive

- Helps reduce the costs of installation by reducing the space needed to emit seven color signals in a single warning light
- Milky translucent color when off, the soft LED illuminates designated color when on
- Can select between standard and built-in buzzer type depending on installation environment
- M12 connector-equipped type is a custom specification(counter parts not included).

QMCL60 Ø60mm Multiple Color LED Steady Signal Lights

Model number	Voltage	Current	Certificates	Weight	Color
QMCL60	DC12V	0.170A	CE	0.12kg	7 Color
	DC24V	0.070A	UL	0.12kg	

QMCL80 Ø80mm Multiple Color LED Steady Signal Lights

Model number	Voltage	Current	Certificates	Weight	Color
QMCL80	DC12V	0.190A	CE	0.17kg	7 Color
	DC24V	0.135A	UL	0.17kg	

QMCL100 Ø100mm Multiple Color LED Steady Signal Lights

Model number	Voltage	Current	Certificates	Weight	Color
QMCL100	DC12V	0.225A	CE	0.24kg	7 Color
	DC24V	0.135A	UL	0.24kg	

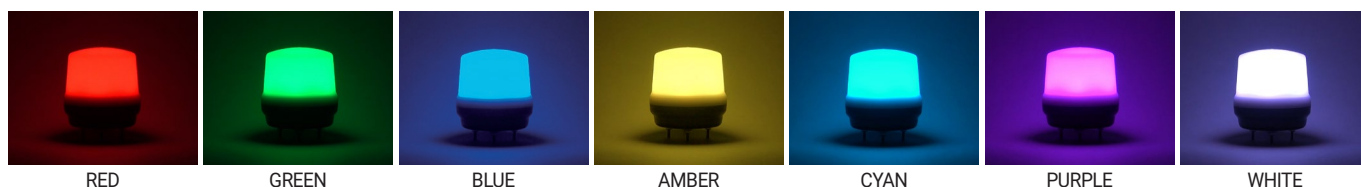
QMCL125 Ø125mm Multiple Color LED Steady Signal Lights

Model number	Voltage	Current	Certificates	Weight	Color
QMCL125	DC12V	0.235A	CE	0.31kg	7 Color
	DC24V	0.190A	UL	0.31kg	

Light source/buzzer current

Model number	Voltage	DC12V	DC24V
QMCL60	Light source current	0.170A	0.070A
	Buzzer current	0.045A	0.065A
QMCL80	Light source current	0.190A	0.135A
	Buzzer current	0.045A	0.065A
QMCL100	Light source current	0.225A	0.135A
	Buzzer current	0.045A	0.065A
QMCL125	Light source current	0.235A	0.190A
	Buzzer current	0.045A	0.065A

Signal Color Options



RED

GREEN

BLUE

AMBER

CYAN

PURPLE

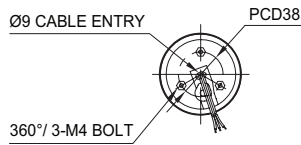
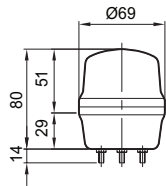
WHITE



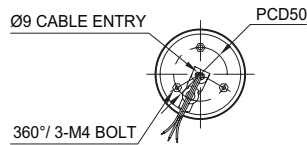
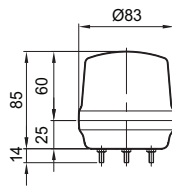
Technical Diagram

Units: mm

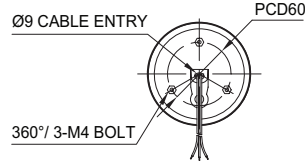
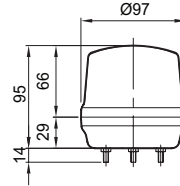
·QMCL60



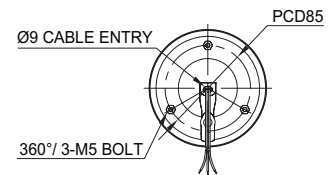
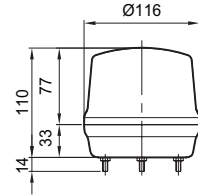
·QMCL80



·QMCL100

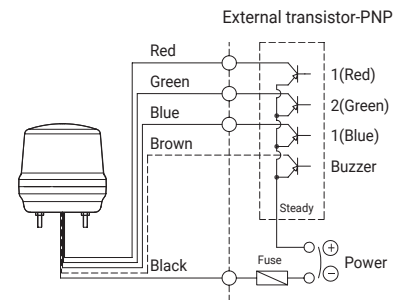
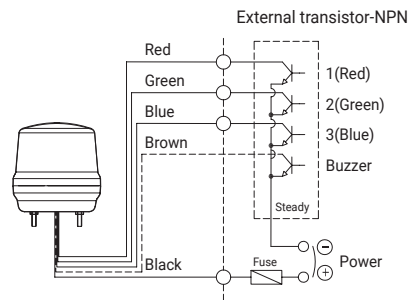
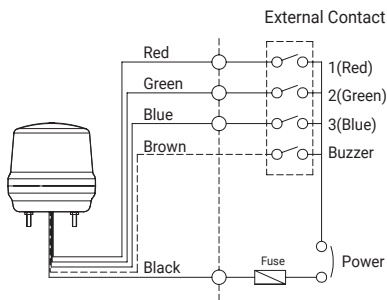


·QMCL125



Wiring Instructions

·QMCL80 / QMCL100 / QMCL125-DC/AC



Customization

- Wall mount bracket options: Bracket structure allows for threading through the bracket hole or into the wall mount

QMCL60		QMCL80		QMCL100 / QMCL125	
Wall Mount Bracket TWS45	Wall Mount Bracket TWA45	Wall Mount Bracket TWS80	Wall Mount Bracket TWA80	Wall Mount Bracket SWP125	Wall Mount Bracket SWM125

Wiring Configuration for Signal Color

No.	Color	Wiring
1	RED	1(Red)
2	GREEN	2(Green)
3	BLUE	3(Blue)
4	AMBER	1(Red)+2(Green)
5	CYAN	2(Green)+3(Blue)
6	PURPLE	1(Red)+3(Blue)
7	WHITE	1(Red)+2(Green)+3(Blue)

Ordering Specification

QMCL80	-	BZ	-	24
[Model number]		[Buzzer option]		[Voltage]
QMCL60		(None)		12-DC12V
QMCL80		- No buzzer		24-DC24V
QMCL100		BZ		
QMCL125		- Built-in buzzer		

Wiring Instructions

- External Power line/External signal line UL1007 AWG22(0.3sq) 400mm
- This product can be wired regardless of polarity.
- Please refer to Wiring Instructions diagram to properly configure color options.