

PRODUCT SPECIFICATION

S180R | S180R-FT

Materials Lens-AS, Housing-STSS, Reflector-PC
Mounting bracket-STSS16L

Ambient operating temperature -20°C to +50°C

Protection rating IP44

Revolving speed 120-140RPM

- Features high durability with housing made of corrosion-proof stainless steel
- Excellent long distance signal transmission effect with 35W capacity bulb and dual reflectors
- FT Models: Easy installation with flange brackets



S180R

S180R / S180R-FT Bulb Revolving Warning Light

Model number	Voltage	Current	Bulb			Certificates	Weight	Color
			Spec	Standard	Parts no			
S180R	DC12V	3.400A	12V35W	RP35 15S	29	CE	1.22kg	● R-Red
	DC24V	1.650A	24V35W	RP35 15S	30		1.22kg	● A-Amber
S180R-FT	AC110V	0.410A	12V35W	RP35 15S	29		1.99kg	● G-Green
	AC220V	0.194A	12V35W	RP35 15S	29		1.99kg	● B-Blue

※ CE compliant: DC24V

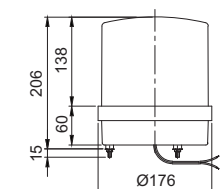


S180R-FT

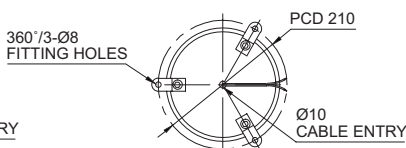
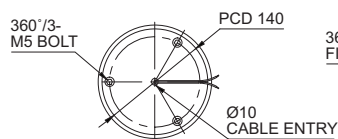
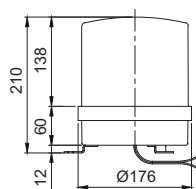
Technical Diagram

Units: mm

·S180R



·S180R-FT



Wiring Instructions

- External Power line - UL1015 AWG18(0.75sq) x 2C 400mm
- DC Type: Black output line is negative(-)
- For the wiring of 110 & 220VAC combination model, 110VAC model is connected to black and white wires while 220VAC model is connected to black and red wires.

Ordering Specification

S180R-FT	-	24	-	R
[Model number]		[Voltage]		[Color]
S180R		12-DC12V		● R-Red
S180R-FT		24-DC24V		● A-Amber
		110-AC110V		● G-Green
		220-AC220V		● B-Blue

Customization

- AC voltage switch built-in type: AC110V and AC220V can be selected with a built-in 110/220V switch.