

## QNE Series

Flame proof LED signal light that features steady/flashing, strobe, and simulated revolving light functions in one unit



QNE



QNE-SUS

### PRODUCT SPECIFICATION

QNE | QNE-SUS

**Materials** Lens-Tempered glass, Filter-PC, Bracket-STS316L, Protection cage-STS316, Housing-Al(QNE), STS316L(QNE-SUS)

**Ambient operating temperature**

-40°C ≤ Tamb ≤ +60°C(T5)

-40°C ≤ Tamb ≤ +50°C(T6)

**Explosion protection rating**

IECEX - Ex db IIC T6/T5 Gb, IP66

ATEX - II 2G Ex db IIC T6/T5 Gb, IP66

NEPSI, CCC - Ex db IIC T5/T6 Gb

KCs - Ex d IIC T6/T5, IP66

**Certificates** IECEX, ATEX, NEPSI, KCs, CCC

**Housing standard color** Red, MUNSELL No. 7.5BG 7/2

**Cable entry** 1/2" NPT

**Flashing rate(LF type)** 60-80 flashes/min.

**Strobe rate(LS type)** 70-80 flashes/min.

**Simulated revolving rate(LR type)** 120-140RPM

- Explosion proof, multifunctional, and compact LED signal light designed for use in explosive gas environments with Ex d C rating
- Features excellent shock and vibration resistance, maintenance significantly reduced with long-lasting LED light source
- Features superior durability with aluminum housing(QNE)
- STS housing provides superior durability and corrosion resistance(QNE-SUS)
- Fully enclosed structure with protection rating of IP66

### QNE Explosion Proof Signal Beacon

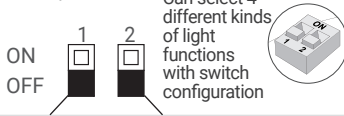
Model number	Voltage	Current	Certificates	Weight	Color
QNE	DC12V-24V	Max.350mA	IECEX ATEX NEPSI KCs	2.05kg	R-Red A-Amber G-Green B-Blue
	AC110V-230V	Max.110mA	CCC		

### QNE-SUS Explosion Proof Signal Beacon

Model number	Voltage	Current	Certificates	Weight	Color
QNE-SUS	DC12V-24V	Max.350mA	IECEX ATEX NEPSI KCs	4.65kg	R-Red A-Amber G-Green B-Blue
	AC110V-230V	Max.110mA	CCC		

### Instruction for Light Function Switch

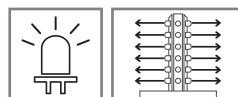
ON=1/OFF=0



Can select 4 different kinds of light functions with switch configuration

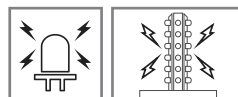
No.	1	2	Operation
0	0	0	LED Steady
1	0	1	LED Flashing
2	1	0	LED Strobe
3	1	1	LED Simulated revolving flashing

### Operation



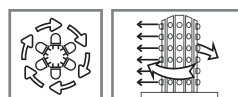
• LED Steady/ Flashing

Repeat operation of LED light on/off



• LED Strobe

Short LED steady/flashing. Creates a xenon flashing effect by providing maximum electric current



• LED Simulated Revolving Flashing

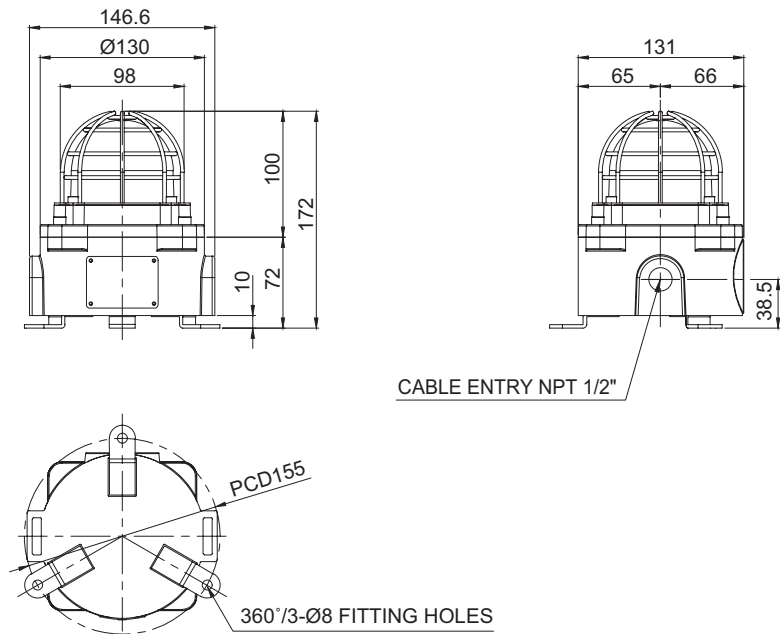
LED flashes steadily around the cylindrical LED filaments which makes a simulated revolving effect



## Technical Diagram

Units: mm

### ·QNE / QNE-SUS



## Customization

- Explosion proof cable gland attached type available (Standard type does not come with explosion proof cable gland)
- 2 ways cable entries
- M20x1.5 cable entry

## Ordering Specification

QNE	-	110/230	-	R	-	SUS	-	IECEX
[Model number]		[Voltage]		[Color]		[Housing materials]		[Certificates]
QNE		12/24-DC12V-24V 110/230-AC110V-230V		<div><div></div> R-Red</div> <div><div></div> A-Amber</div> <div><div></div> G-Green</div> <div><div></div> B-Blue</div>		None - Al SUS - STS316L		IECEX ATEX KCs CCC(NEPSI)