

QWL20 / QWL20-DT



QWL20 / QWL20-DT

PRODUCT SPECIFICATION

QWL20

Materials Housing-Al, Lens-PC, Bracket-STs

Ambient operating temperature -40°C to +75°C

Protection rating IP67

Certificates CE, UL

- Water / Dust proof LED work light that resists against severe storm and heavily dusty environment
- IP67 protection rating, waterproof & dust resistant model that can be used where dusty and flooded area
- Polycarbonate lens allows excellent vibration and impact resistance.
- Long lifetime with a high intensity LED light source allows for easy maintenance
- Features excellent durability in construction environment with heavy machineries such as excavators, cranes, off-road vehicles

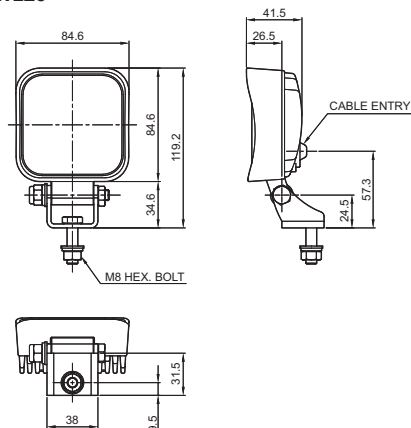
QWL20 / QWL20-DT Water and Dust proof LED Work Lights

Optics Specifications			
Model number	QWL20	QWL20-DT	
Directions	Translucent		
Light color	Cooldaylight		
Color temperature	5,500-6,500 K		
Luminous flux	650lm		
Illumination(at 1m)	4,300Lux		
Specifications			
Model number	QWL20	QWL20-DT	
Voltage	DC12V-24V		
Range for operation voltage	DC10V-30V		
Power consumption	Max.11.5W		
Insulation resistance	Min. 50MQ(500V DC mega ohm meter)		
Withstanding voltage	DC: 500VAC, 60Hz, 1 minute		
Operating temperature	-40°C to +75°C		
Protection rating	IP67		
Materials	Housing-AL, Lens-PC, Bracket-STs		
Certifications	CE UL		
Weight(Approx.)	0.40Kg		

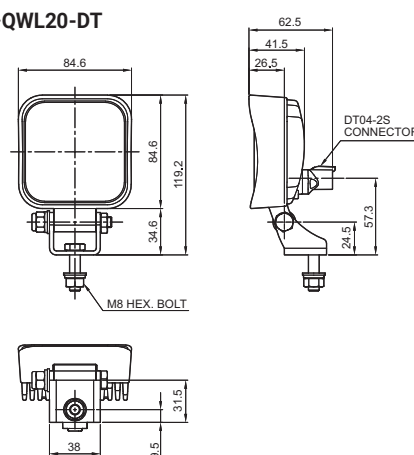
Technical Diagram

Units: mm

·QWL20



·QWL20-DT



Ordering Specification

QWL20-DT	-	12/24
[Model number]		[Voltage]
QWL20		12/24-DC12V-24V
QWL20-DT		

Cautions in use

- Please read user manual carefully prior to operation to ensure safe and correct use. Failure to follow safety instructions may lead to electric shock because of fire and short circuit. Specification and dimensions listed in this catalogue subject to change without notice for product quality improvement.
- The newest product information is available on our website.