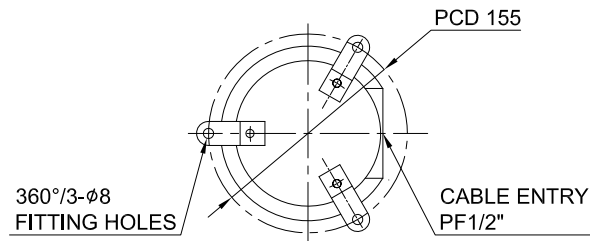
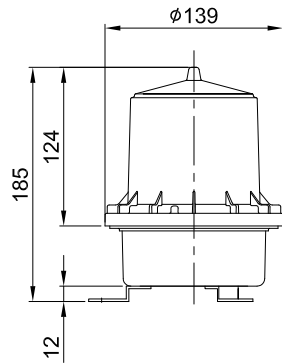
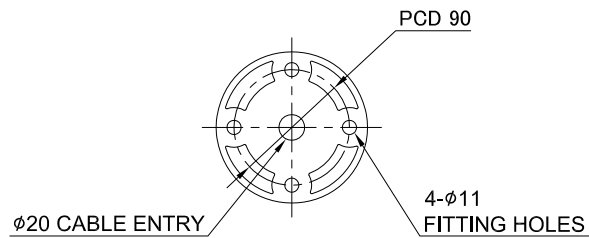
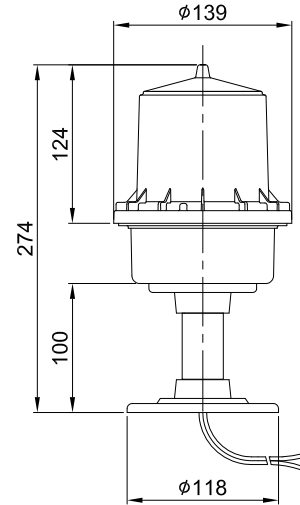


SAOL2





SAOL2P



MARK	DATE	REVISION	REVISER	APP.BY
△				
△				
△				

MODEL NO			SAOL2			
MATERIAL			HOUSING-AL			
			LENS-PC			
			POLE-SUS304(SAOL2P ONLY)			
LIGHT SOURCE			LOW INTENSITY A TYPE			
LIGHT COLOR			RED			
USE VOLT.	LED	CURRENT	DC12V	20W	MAX. 0.760A	
			DC24V		MAX. 0.250A	
			AC110V~220V		MAX. 0.145A	
LUMINOUS INTENSITY			19cd ±25%			
PROTECTION GRADE			WATER & DUST PROOF IP66			
CABLE ENTRY			SAOL2-CABLE ENTRY PF1/2"			
			SAOL2P-φ20 CABLE ENTRY			
COLOR OF HOUSING			MAKER STANDARD			
ACTION			LED STEADY LIGHT			

ISO2768-1 : CLASS OF TOLERANCE						SURFACE FINISH	-	-	-	-	1	-
FOR LINEAR DIMENSIONS		f	m	Ⓒ	v		Nr.	DWG. NO.	TITLE/ NAME	MAT'L	QT'Y	REFERENCE
	0.5~3	±0.05	±0.1	±0.2	-	DSND BY S.H.KIM	CHKD BY J.H.PARK	CHKD BY 	APRV BY J.K.HAN	VIEW 3	DATE 2016.08.30	
	3~6			±0.3	±0.5							
	6~30	±0.1	±0.2	±0.5	±1	TITLE SAOL2 OUTLINE DRAWING		MODEL SAOL2				
	30~120	±0.15	±0.3	±0.8	±1.5				DWG. NO. SAOL2_OUT			
	120~400	±0.2	±0.5	±1.2	±2.5					SCALE N/S	SIZE A4	REV 00
400~1000	±0.3	±0.8	±2	±4								
FOR ANGULAR DIMENSIONS	0~10	±1°		±1°30'	±3°							
	10~50	±0°30'		±1°	±2°							
	50~120	±0°20'		±0°30'	±1°							
	120~400	±0°10'		±0°13'	±0°30'							